

Features

- Compact design
- In-line mounted
- Quiet operation
- Instantaneous shutoff against reverse flow, low forward pressure opening
- Disc seats before reverse flow to avoid fluid shock on reverse pressure differential

Construction

Valve Parts in Contact with Fluids		
Body	Brass	316L Stainless Steel
Valve Seat	NBR and EPDM seat at zero pressure in spring-loaded valves.	NBR
	Metal seated - leakage on air up to 65 SCFH.	Bubble Tight



Nominal Ambient Temp. Ranges

8800 Series: -4°F to 221°F (-20°C to 105°C)

V012 Series: 32°F to 125°F (0°C to 52°C)

Refer to Engineering Section for details.

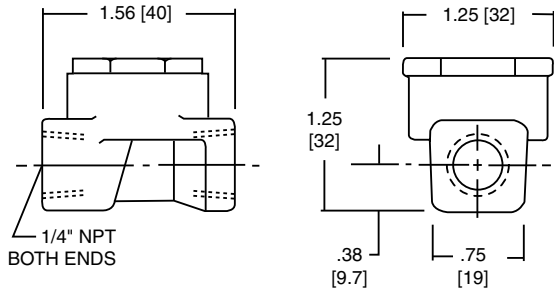
Specifications (English units)

Pipe Size (in)	Orifice Size in (mm)	Flow Cv (Kv)	Operating Pressure (psi)	Maximum Operating Pressure Differential psi (bar) Air-Inert Gas, Water, and Light Oil	Max. Fluid Temp. °F (°C)	Catalog Number	Const. Ref.
FORGED BRASS BODY with NBR Disc							
1/4	9/32 (7)	.70 (.60)	1 (0.07)	150 (10)	200 (92)	V012 001	1
3/8	3/8 (10)	1.2 (1.03)	1 (0.07)	150 (10)	200 (92)	V012 002	2B
1/2	7/16 (11)	2.5 (2.14)	1 (0.07)	150 (10)	200 (92)	V012 003	2C
3/4	1/2 (13)	3.6 (3.09)	1 (0.07)	150 (10)	200 (92)	V012 004	2D
STAINLESS STEEL BODY with NBR Disc							
1/4	9/32 (7)	1.1 (0.95)	0 (0)	232 (16) ①	221 (105)	8800A90000N0000	3
1/2	1/2 (13)	5.3 (4.58)	0 (0)	232 (16) ①	221 (105)	8800A90200N0000	4
FORGED BRASS BODY with EPDM Disc for Low-Pressure Steam							
1/4	3/8 (10)	1.2 (1.03)	1 (0.07)	50 (3)	300 (147)	V012 010	2A
3/8	3/8 (10)	1.2 (1.03)	1 (0.07)	50 (3)	300 (147)	V012 011	2B
1/2	7/16 (11)	2.5 (2.14)	1 (0.07)	50 (3)	300 (147)	V012 012	2C
3/4	1/2 (13)	3.6 (3.09)	1 (0.07)	50 (3)	300 (147)	V012 013	2D
FORGED BRASS BODY with Metal Seating for High-Pressure Steam							
1/4	3/8 (10)	.70 (.60)	8 (0.55)	200 (14)	388 (196)	V012 014	2E
3/8	3/8 (10)	.70 (.60)	8 (0.55)	200 (14)	388 (196)	V012 015	2E
1/2	1/2 (13)	3.4 (2.91)	4 (0.28)	200 (14)	388 (196)	V012 016	2F
3/4	1/2 (13)	5.1 (4.37)	4 (0.28)	200 (14)	388 (196)	V012 017	2F

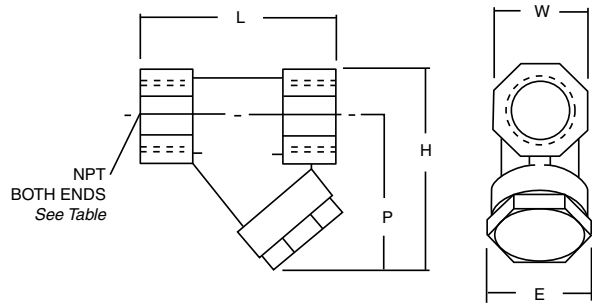
① Only for use with air or inert gas

Dimensions inches (mm)

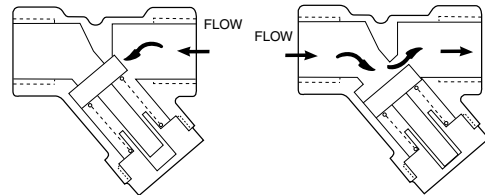
Const. Ref. 1



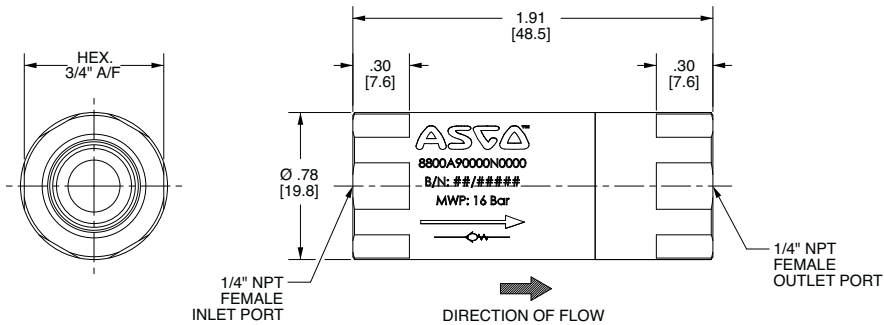
Const. Ref. 2



Const. Ref.	E	H	L	P	W
2A	1.16 [30]	2.03 [52]	1.91 [49]	1.56 [40]	0.88 [22]
2B	1.16 [30]	2.09 [53]	1.91 [49]	1.66 [42]	0.88 [22]
2C	1.16 [30]	2.38 [61]	2.28 [58]	1.84 [47]	1.09 [28]
2D	1.31 [33]	2.62 [67]	2.75 [70]	1.84 [47]	1.31 [33]
2E	1.16 [30]	2.38 [61]	2.28 [58]	1.84 [47]	1.09 [28]
2F	1.38 [35]	2.94 [75]	2.75 [70]	2.16 [55]	1.31 [33]



Const. Ref. 3



Const. Ref. 4

