

FEATURES

- Pad-mount version for valve piloting applications
- Incorporation in borers for machine tool manufacturers
- Suitable for dosing/filling applications and industrial washing machines
- Compact solenoid valve for easy installation
- Epoxy moulded coil for general service applications
- Two maximum pressure ratings depending on coil power
- Three manual operator versions
- Flexible installation on joinable subbases
- The solenoid valves satisfy all relevant EC directives

GENERAL

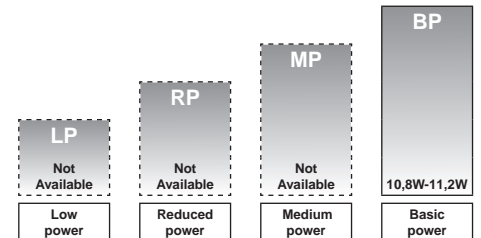
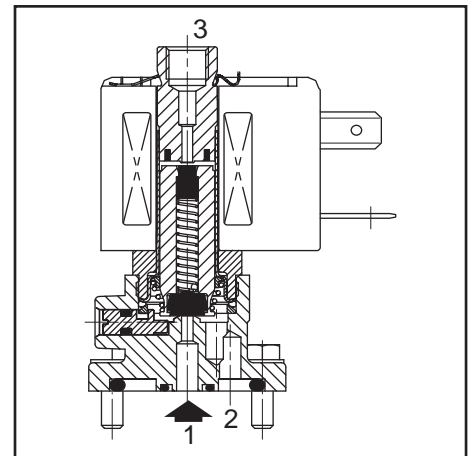
Differential pressure See "SPECIFICATIONS" [1 bar = 100 kPa]
Maximum viscosity 40 cSt (mm²/s)
Response time 8 - 20 ms

fluids (*)	temperature range (TS)	seal material (*)
water, air, inert gas, oil	- 25°C to + 80°C	NBR (nitrile)

MATERIALS IN CONTACT WITH FLUID

(*) Ensure that the compatibility of the fluids in contact with the materials is verified

Body	Brass
Internal parts, spring	Stainless steel
Seat	Brass
Seals	NBR
Core guide	POM
Shading coil	Copper



POWER LEVELS - cold electrical holding values (watt)

SPECIFICATIONS

pipe size	orifice size (mm)	flow coefficient Kv				operating pressure differential (bar)		power level BP		prefix optional solenoids					basic catalogue number	
		1 → 2		2 → 3		min.	max. (PS)		ATEX / IECEx				IP65			
		(m ³ /h)	(l/min)	(m ³ /h)	(l/min)		air/water/oil (*)	~	=	Ex d	Ex e mb	Ex mb		-		
NC - Normally closed																
pad mounting	2,0	0,11	1,8	0,15	2,5	0	16	-	8	-	-	-	-	-	●	S374A001
	2,0	0,11	1,8	0,15	2,5	0	-	8	-	10,8	-	-	-	-	●	S374A061
	2,0	0,11	1,8	0,15	2,5	0	16	16	10,5	11,2	●	●	●	-	●	S374A016
	2,7	0,22	3,6	0,15	2,5	0	10	-	8	-	-	-	-	-	●	S374A002
	2,7	0,22	3,6	0,15	2,5	0	-	5	-	10,8	-	-	-	-	●	S374A062
	2,7	0,22	3,6	0,15	2,5	0	10	10	10,5	11,2	●	●	●	-	●	S374A017

● Available feature - Not available

All leaflets are available on: www.asconumatics.eu

PREFIX TABLE

prefix							description	power level			
1	2	3	4	5	6	7		LP	RP	MP	BP
E	M		E	T			Waterproof IP67 - Metal enclosure (EN/IEC 60079-7+18, 61241-1)* Threaded conduit/hole (M20 x 1,5)	-	-	-	● ⁽¹⁾
N	K						Flameproof - Aluminium (EN/IEC 60079-1 / 61241-1) *	-	-	-	● ⁽¹⁾
P	V						Encapsulated epoxy moulded (EN/IEC 60079-18, 61241-18)*	-	-	-	● ⁽¹⁾
S	C						Solenoid with spade plug connector (EN/IEC 60730)	-	-	-	● ⁽¹⁾
W	P						Waterproof IP67 - Metal enclosure	-	-	-	● ⁽¹⁾
W	S						Waterproof IP67 - 316 SS enclosure	-	-	-	● ⁽¹⁾
W	S	E	M				Waterproof IP67 - 316 SS enclosure (EN/IEC 60079-7+18, 61241-1)*	-	-	-	● ⁽¹⁾
Z	N						Moulded enclosure (EN 50021, 50281-1-1)* Threaded conduit (1/2" NPT)	-	-	-	● ⁽¹⁾
					H	T	Class H - High temperature	-	-	-	● ⁽¹⁾
						X	Other special constructions	-	-	-	● ⁽¹⁾

SUFFIX TABLE

suffix					description	power level			
1	2	3	4	5		LP	RP	MP	BP
E					EPDM (ethylene-propylene)	-	-	-	●
V					FPM (fluoroelastomer)	-	-	-	●
N	V				FPM (fluoroelastomer) and parts cleaned for oxygen service	-	-	-	●
		M	S		Screw type manual operator	-	-	-	●
		M	O		Push type manual operator	-	-	-	●

OPTIONS & ACCESSOIRES

catalogue number	spare parts kit n°(2)		screw type manual operator	push type manual operator
	~	=		
S374A001/002	C140160	-	C140048	-
S374A061/062	-	C140161	C140048	-
S374A016/017	C140160	C140160	C140048	-

● Available feature

- Not available

* ATEX solenoids are also approved according to EN 13463-1 (non electrical valves)

(1) Power level 10,5/11,2: Available feature, see Specifications page 1

(2) Standard suffixes E and V are also applicable to kits

(3) Basic kit number applies to SC coil construction

PRODUCT SELECTION GUIDE

STEP 1

Select basic catalogue number, including pipe thread identification letter. Refer to the specifications table on page 1.

Example: S374A016

STEP 2

Select prefix (combination). Refer to the specifications table on page 1 and the prefix table on page 2, respect the indicated power level.

Example: SC

STEP 3

Select suffix (combination) if required. Refer to the suffix table on page 2, respect the indicated power level.

Example: MS

STEP 4

Select voltage. Refer to standard voltages on page 3.

Example: 230V / 50Hz

STEP 5

Final catalogue / ordering number.

Example:

SCS374A016MS 230 V / 50 Hz

ORDERING EXAMPLES VALVES:

SC	S	374	A	016	MS	230V / 50 Hz
SCHT	S	374	A	017		230V / 50 Hz
WS	S	374	A	005	MS	24V / DC
WP	S	374	A	016		24V / DC
EM	S	374	A	017	MS	230V / 50 Hz

prefix: SC, pipe thread: A, basic number: 374, voltage: 230V / 50 Hz, suffix: MS

ORDERING EXAMPLES KITS:

C140160	(3)
C140160	V
C140160	E

basic number: C140160, suffix: V, E

EXPLANATION OF TEMPERATURE RANGES OF SOLENOID VALVES

Valve temperature range	The valve temperature range (TS) is determined by the selected seal material, the temperature range for proper operation of the valve and sometimes by the fluid (e.g. steam)
Operator ambient temperature range	The operator ambient temperature range is determined by the selected power level and the safety code
Total temperature range	The temperature range of the complete solenoid valve is determined by the limitations of both temperature ranges above

ELECTRICAL CHARACTERISTICS

Coil insulation class	F
Connector specification	ISO 4400 / EN 175301-803, form A
Connector	Spade plug (cable Ø 6-10 mm)
Electrical safety	IEC 335
Standard voltages	DC (=) 24V - 48V AC (~) 24V - 48V - 115V - 230V/50Hz; other voltages and 60Hz are available on request

prefix option	power ratings				operator ambient temp. range (TS) (C°)	safety code	electrical enclosure protection (EN 60529)	replacement coil / kit		type ⁽¹⁾
	inrush ~	holding ~	hot/cold =					~	=	
	(VA)	(VA)	(W)	(W)				230 V / 50 Hz	24 V DC	
Basic power (BP)										
SC	23	14	8	8/10,8	-25 to +60	EN 60730	moulded IP65	43005096	43005099	01
SC	55	23	10,5	9/11,2	-40 to +75	EN 60730	moulded IP65	400425-117	400425-142	02
WP	55	23	10,5	9/11,2	-40 to +75	EN 60730	steel IP67	400405-117	400405-142	04
WS	55	23	10,5	9/11,2	-40 to +75	EN 60730	steel IP67	400405-117	400405-142	04
NK	55	23	10,5	9/11,2	-40 à +50/60	II 2G/D Ex d IIB+H ₂ T4/Ex tD	aluminium IP65	400405-117	400405-142	03
EM/WSEM	55	23	10,5	9/11,2	-40 to +40	II 2G/D Ex emb II T3/Ex tD	steel/SS IP67	400-909-117	400-913-142	04
PV	55	23	10,5	9/11,2	-40 to +65	II 2G/D Ex mb II T3(-)/T4(-)/Ex mD	moulded IP65	- ⁽²⁾	- ⁽²⁾	05

- Not available

⁽¹⁾ Refer to the dimensional drawings on pages 4 to 5

⁽²⁾ Multiple coil kits available under ATEX, contact us

ADDITIONAL OPTIONS

- Other pipe threads are available on request
- Button type manual operator, use TPL 20655, example: SCXS272A017 TPL20655 (available for all versions)
- Ex mb (prefix "PV") execution can be supplied in various cable lengths
- Brass subbases: Single (1/4), catalogue number **36101001** / Joinable (1/4), catalogue number **36101027**
Aluminium subbases: Single (1/2), catalogue number **36101029**
Aluminium supply rail (1/2) for 2 to 6 valves (**36101030** to **36101034**), 8 valves (**36101035**), or 10 valves (**36101036**)
- 1/2" NPT (prefix "T") and M20 x 1,5 (prefix "ET") conduits (aluminium or 316 SS) available for steel solenoid housing

INSTALLATION

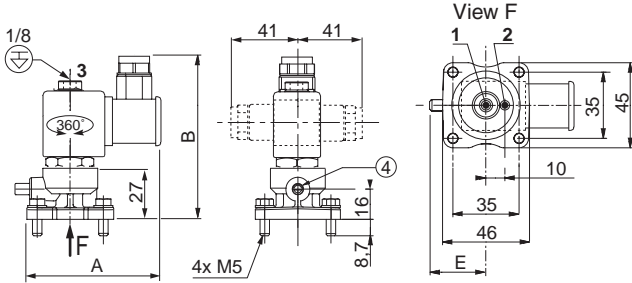
- Installation/maintenance instructions are included with each valve
- The solenoid valves can be mounted in any position without affecting operation
- Mounting on single or joinable subbase or on supply rail, four mounting holes
- ATEX 94/9/EC versions can be installed on single or joinable brass subbases
- Pipe connection G 1/8 has standard thread according to ISO 228/1
1/4 and 1/2 subbase pipe connections (G*) have standard combination thread according to ISO 228/1 and ISO 7/1
- Prefix "NK" enclosure is provided with a 3/4" NPT threaded entry hole [optionally, 1/2" NPT (prefix "T") or M20 x 1,5 (prefix "ET")] and is supplied without cable gland

DIMENSIONS (mm), WEIGHT (kg)



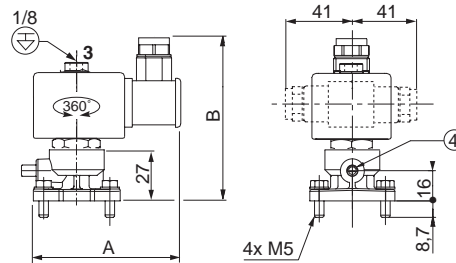
TYPE 01:
SC
Epoxy moulded
IEC 335 / ISO 4400

374A001 / 374A061 / 374A002 / 374A062



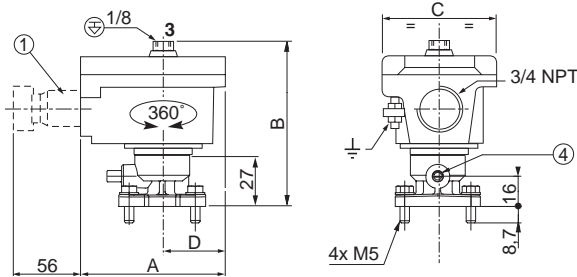
TYPE 02:
SC
Epoxy moulded
IEC 335 / ISO 4400

374A016 / 374A017



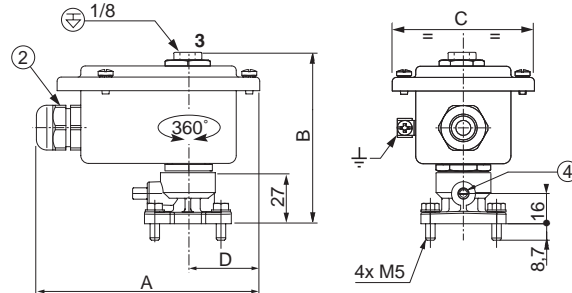
TYPE 03:
NK
Aluminium; epoxy coated
EN/IEC 60079-1 et EN/IEC 61241-1

374A016 / 374A017



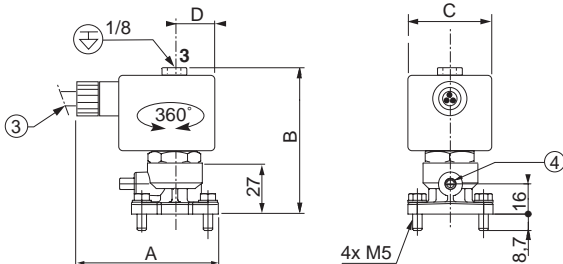
TYPE 04:
WP / WS
EM / WSEM
Steel; epoxy coated / AISI 316 SS
IEC 335 / EN/IEC 60079-7/18 and EN/IEC 61241-1

374A016 / 374A017



TYPE 05:
PV
Epoxy encapsulated
EN/IEC 60079-18 and EN/IEC 61241-18

374A016 / 374A017

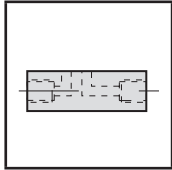


- ① Ex d certified cable gland (on request)
- ② Cable gland for unarmoured cable with 6 to 12 mm dia. sheath
- ③ Three-core cable, length 2 m
- ④ Manual operator location
- ⊕ Connectable pilot exhaust port

type	prefix option	power level	A	B	C	D	E			weight
							screw type	button type	push type	
01	SC	Basic Power	75,5	93,2	-	-	21,5	30	34	0,34
02	SC	Basic Power	86,5	93,2	-	-	21,5	30	34	0,53
03	NK	Basic Power	100	91	69	35,5	21,5	30	34	0,85
04	WP / WS / EM / WSEM	Basic Power	120	93	77	38	21,5	30	34	0,77
05	PV	Basic Power	75	77,4	45	21	21,5	30	34	0,57

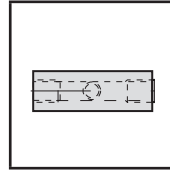
SUBBASES

DIMENSIONS (mm), WEIGHT (kg)



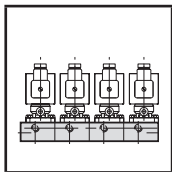
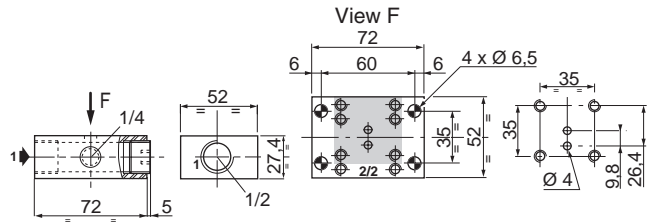
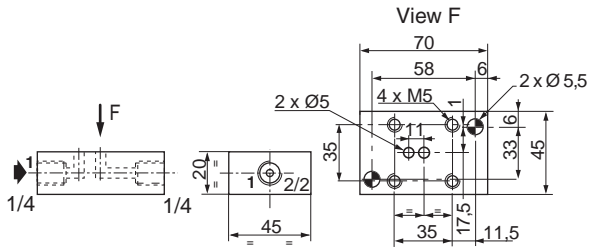
TYPE 06:
Single brass subbase

36101001



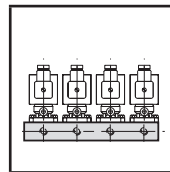
TYPE 07:
Single aluminium subbase

36101029



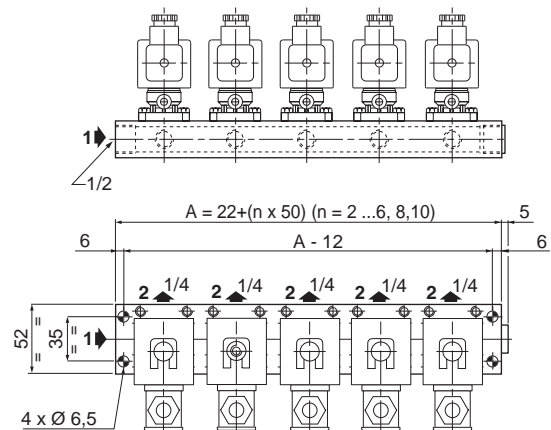
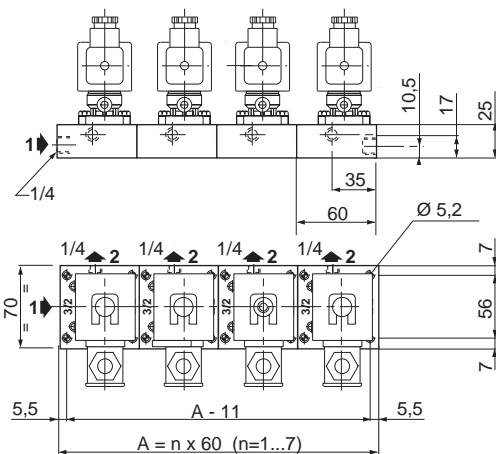
TYPE 08:
(ATEX/IECEx: PV Solenoids)
Joinable brass subbases

36101027 (unit)



TYPE 09:
Aluminium supply rail

36101030...1036



type	weight	
06	brass subbase	0,453
07	aluminium subbase	0,228

type	weight									
	number of valves									
08	2	3	4	5	6	7	8	9	10	
09	0,379	0,530	0,681	0,832	0,983	-	1,285	-	1,587	

All leaflets are available on: www.asconumatics.eu