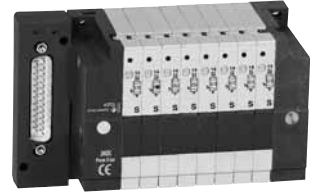


COMPACT 8 & 13 valve islands are available in different versions to meet the needs of all systems; IP65 protection is available for direct incorporation in a machine. The connection is made with a multiwire cable or fieldbus control.

### ■ MULTIWIRE CONNECTION: MULTIPOL

MULTIPOL allows the connection to a control system (PLC) with a multiwire cable for simple wiring. The electrical connection is made with a 25-pin SUB-D connector. Maximum capacity of a MULTIPOL island: 16 spool valves, with a limitation of 21 solenoid coils.



### ■ FIELDBUS CONTROL - BUSLINK

#### • PROFIBUS-DP protocol

Valve island for data exchange via PROFIBUS-DP protocol. Connection between the control system (PLC) and the valve islands by means of 2 round M12 connectors, code B or a T-connector. Supply connection with 4-pin M8 connector. Maximum capacity of a PROFIBUS-DP island: 16 spool valves.



**PROFI**  
PROCESS FIELD BUS  
**BUS**

#### • DEVICE NET or CAN OPEN protocol

Valve island for data exchange via DEVICE NET or CAN OPEN protocol. Connection with a 5-wire cable. Connection with a round 5-pin M12 connector. Supply connection with 4-pin M8 connector. Maximum capacity of a DEVICE NET/CAN OPEN island: 16 spool valves.



**DeviceNet**<sup>TM</sup>  
**CANopen**

#### • AS-Interface V3.0 protocol

Valve island for data exchange via AS-Interface protocol, version 3.0 and SINGLE addressing. Bus and Power supply connection via flat cable on vampire plug. Module with up to 4 nodes: maximum of 16 single coil valves or 8 dual coil valves. Possibility to have integrated M12 inputs (up to 16)



**ASi**  
INTERFACE

#### • PROFIBUS-DP, DEVICE NET or CAN OPEN protocol

Possibility to connect input modul to control sensors status (see page P596)



**PROFI**  
PROCESS FIELD BUS  
**BUS**<sup>TM</sup>  
**DeviceNet**<sup>TM</sup>  
**CANopen**

### COMPACT 8 & 13 VALVE ISLANDS

#### Maximum performance

COMPACT 8 & 13 pneumatic valve islands go even further in miniaturisation. They offer maximum flow performance in a minimum amount of space with spool valves of only 8 or 13 mm width.

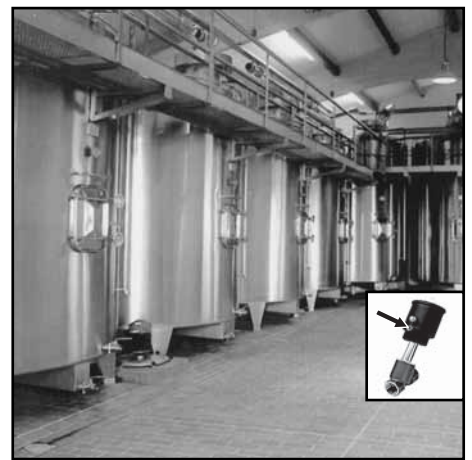
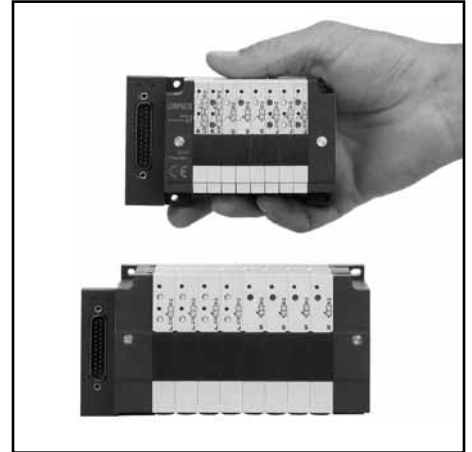
Their features:

- 300 l/min ANR (Compact 8) or 900 l/min ANR (Compact 13)
- IP 65 protection rating for direct assembly onto machines
- New multiwire configuration in standard or optimised mode
- Fieldbus compatibility
- Flexible configuration options
- Ease of installation and use

#### Small and communicative for total integration

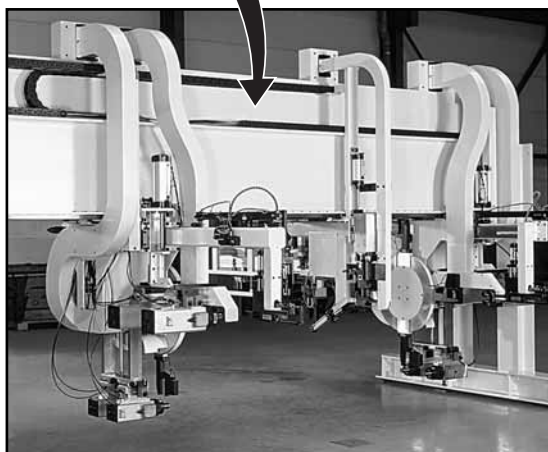
The COMPACT 8 is the smallest and most light-weight valve island currently on the market for a 300 l/min SRA flow. It is therefore the perfect match for applications where compact size is a factor of choice.

The COMPACT 13 can supply pressure to cylinders with barrels of up to 80 mm. Because of their small dimensions, superior performances and multiple connection options, the COMPACT 8 & 13 islands can be directly incorporated in machines and provides electrical connections suited to all types of installations.

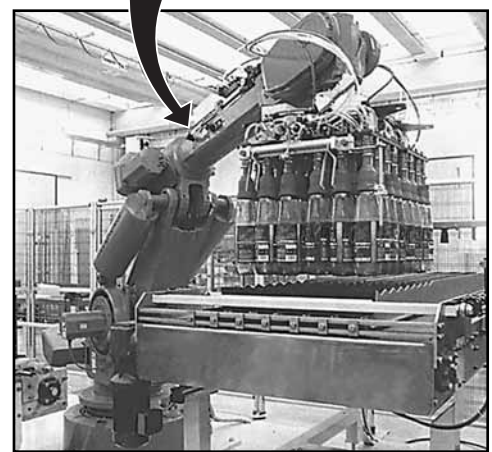
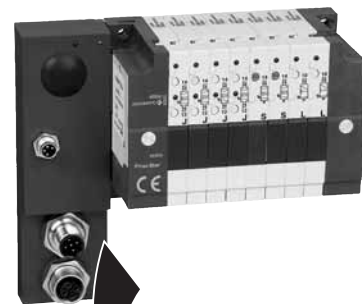


- For valve piloting applications with high humidity level (cleaning process or ambient humidity) we recommend to install Compact 8 & 13 valve islands into cabinets.
- For mobile applications (conveyor, handling..) the cables of the network must be fixed to the machine to avoid inertia effect on connectors.

Multipol valve island



Buslink valve island for operation with the following fieldbus systems: Profibus-DP, DeviceNet, CANopen, or AS-Interface

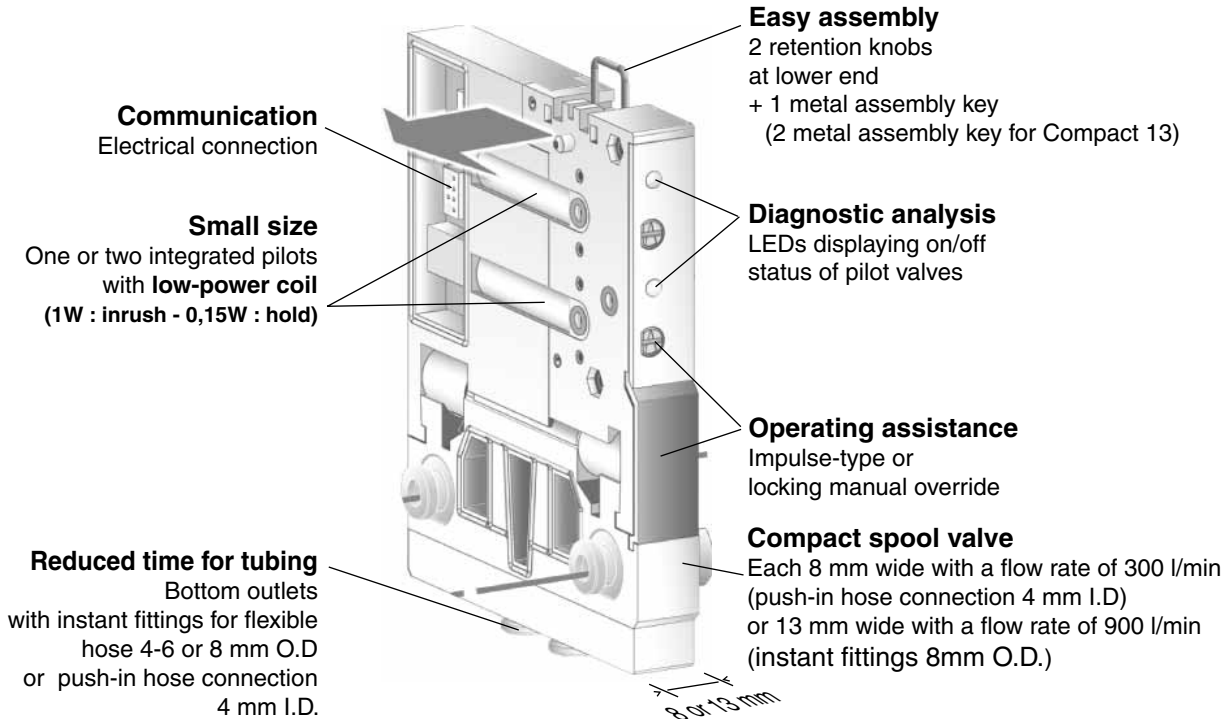


All leaflets are available on: [www.asco-process-scope.com](http://www.asco-process-scope.com)

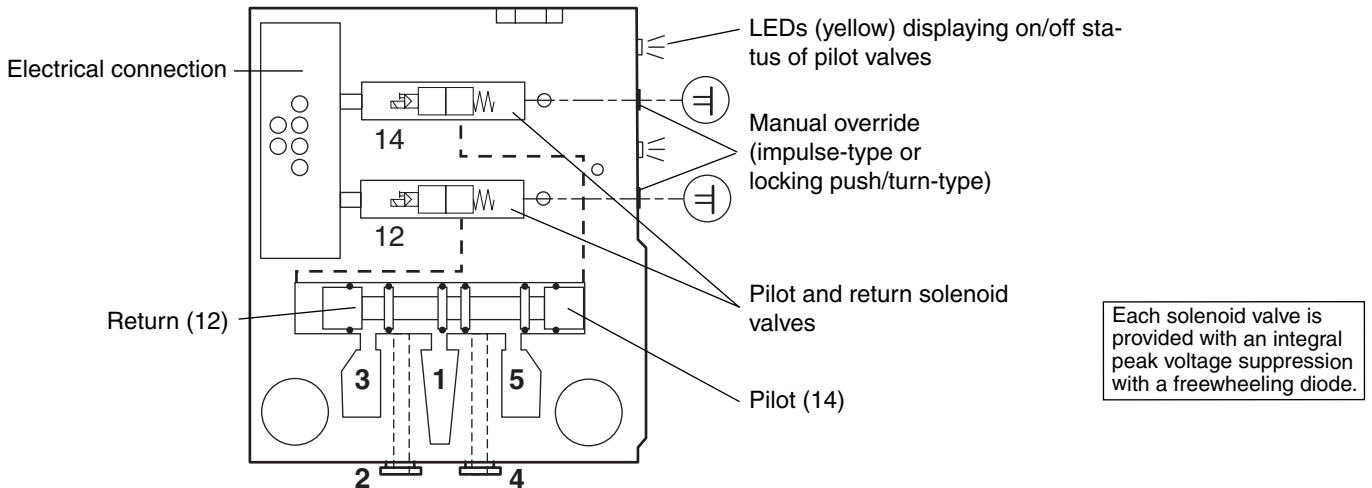
# SOLENOID AIR OPERATED COMPACT 8 & 13 SPOOL VALVES

ASCO/JOUCOMATIC introduces a new concept of solenoid air operated spool valves which can be fitted together to form islands. Due to their new design, the major advantages of these spool valves are their reduced size, superior performance and modular structure. They offer simple operation, as well as diagnostic analysis and maintenance features.

**Multiwire version (Multipol)  
or fieldbus control (Buslink)**



### Structure of the joinable spool valves



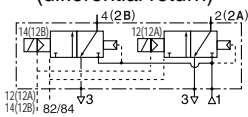
### RANGE OF SPOOL VALVES

Seven functions are available in the monostable or bistable version in the same size.

**2 x 3/2 NC monostable**

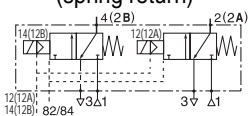
**Compact 8**

(differential return)



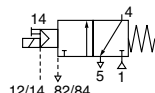
**or Compact 13**

(spring return)



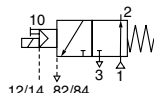
Type : K

**3/2 NC**  
(spring return)



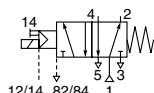
Type : Z

**3/2 NO**  
(spring return)



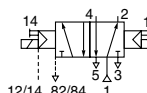
Type : L

**5/2 monostable**  
(spring return)



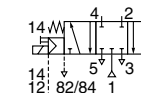
Type : S

**5/2 bistable**



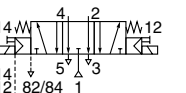
Type : J

**5/3 centre closed**  
(W1)



Type : G

**5/3 centre open to exhaust**  
(W3)

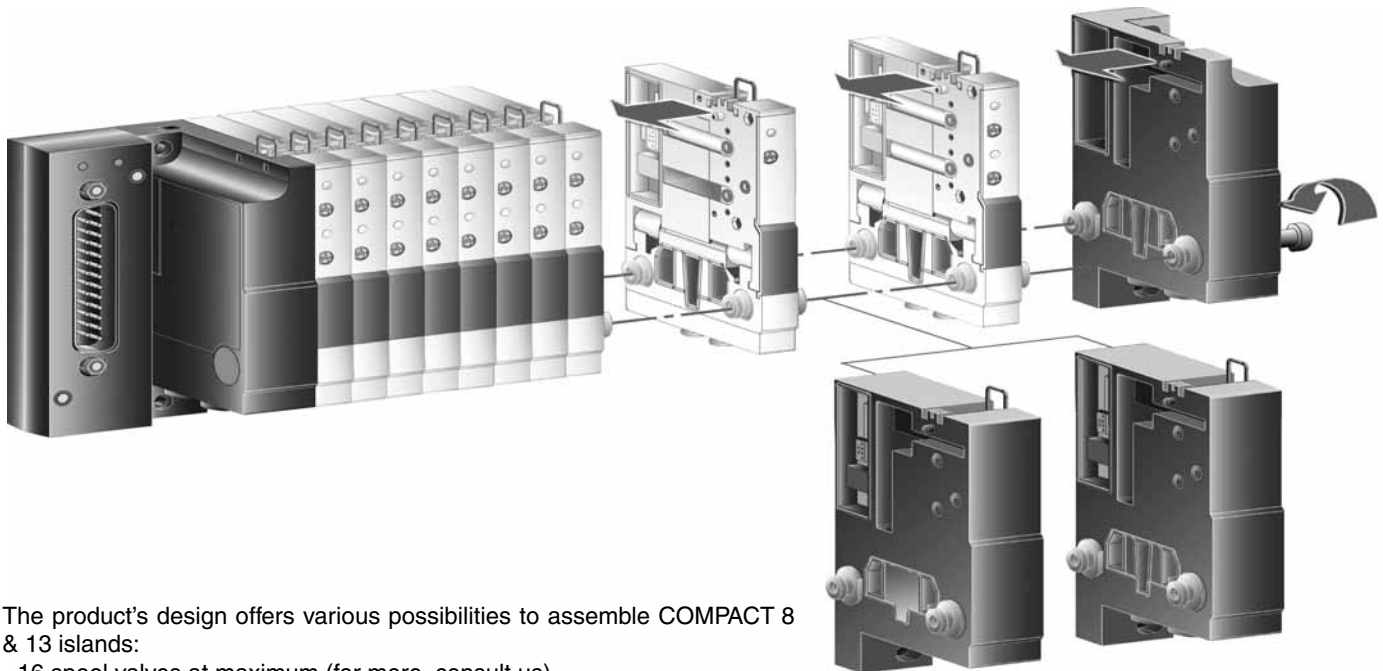


Type : E

All leaflets are available on: [www.asco-process-scope.com](http://www.asco-process-scope.com)

### MODULAR DESIGN

COMPACT 8 & 13 valve islands: functional, modular units which are adapted to your needs and save time with quick and easy assembly. The islands are delivered pre-assembled, tested and ready for installation, or in individual components to be fitted together on-site.



The product's design offers various possibilities to assemble COMPACT 8 & 13 islands:

- 16 spool valves at maximum (for more, consult us).
- Mixture of all types of spool valves
- Internal or external pilot pressure supply (identical for the whole island).
- Accessory intermediate pressure modules to supply the island with more than one pressure level including vacuum.
- On-site extension due to easy assembly.

### CHOICE OF ELECTRICAL CONNECTION

With the COMPACT 8 & 13 valve island you can choose between different types of electrical connection modules.

- (A) Spool valves with modular electrical connection
- (B) Multiwire MULTIPOL connection module - IP65
- (C) Connection module for PROFIBUS-DP
- (D) Connection module for DEVICE-NET or CAN OPEN
- (E) Connection module for AS-Interface

The versions shown opposite can be assembled with these components.

