

Generation C spool valve islands are available in different versions to meet specific system needs: multiwire cable connection or fieldbus control.

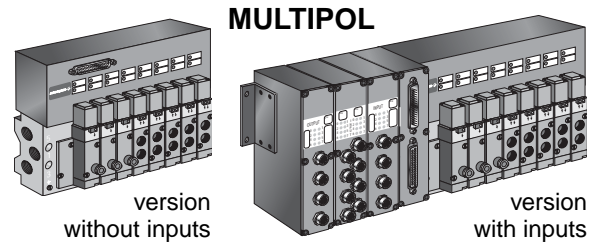
MULTIPOL

Pneumatic valve island for connection to a PLC with multiwire cable and connector.

The following two versions are available:

- without inputs
- with inputs

Electrical connection is made with a 37-pin Sub-D connector



BUSLINK

Pneumatic valve island for data exchange via fieldbus and one of the protocols given below.

Special BUSLINK versions are available for use in **potentially explosive atmospheres** caused by dusts or gases.

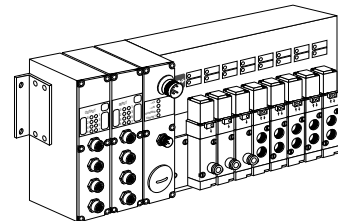
Classification: II3GD EEx nA II T5 IP65 T90°C



PROFIBUS - DP

Supply voltage connection
Bus connection (IN/OUT)

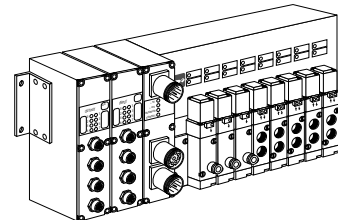
4-pin male M18 connector
5-pin male M12 connector
(IP65 version)



INTERBUS - S

Supply voltage connection
Bus connection (IN/OUT)

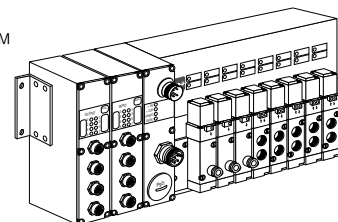
6-pin male M18 connector
(or M23 as option)
M23 connector
with 9 male pins (IN)
with 9 female pins (OUT)



DEVICE NET

Supply voltage connection
Bus connection (IN/OUT)

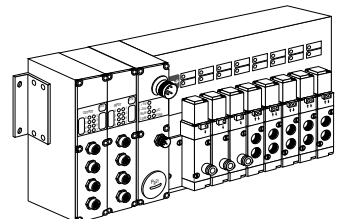
4-pin male M18 connector
5-pin male 7/8" UN connector



FIPIO

Supply voltage connection
Bus connection (IN/OUT)

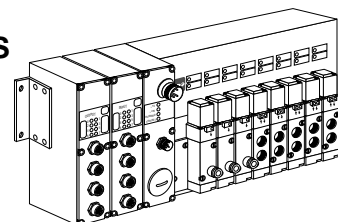
4-pin male M18 connector
5-pin male M12 connector



MODBUS

Supply voltage connection
Bus connection (IN/OUT)

4-pin male M18 connector
5-pin male M12 connector



All leaflets are available on: www.asco-process-scope.com

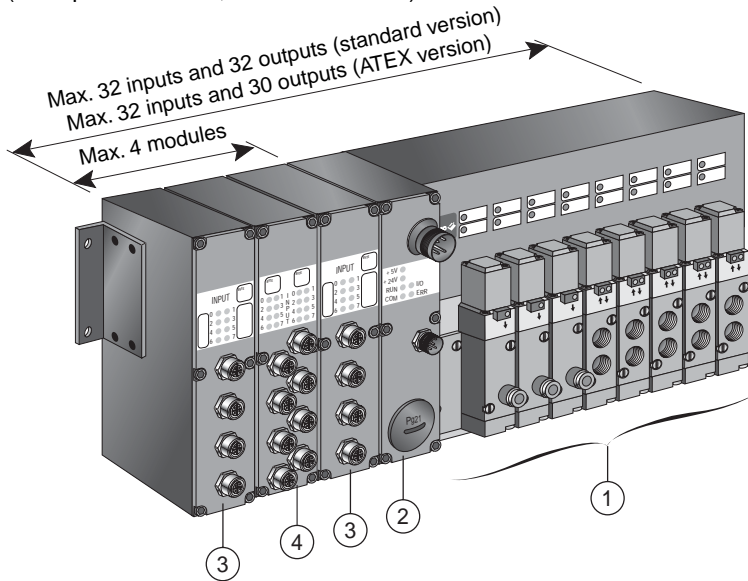
Easy communication with PLC
Reduced time and costs for wiring
Easy maintenance

BUSLINK system

Connection between a PLC and the spool valve island with a serial 2- or 9-wire cable, depending on the communication protocol used. Compatible standard protocols:



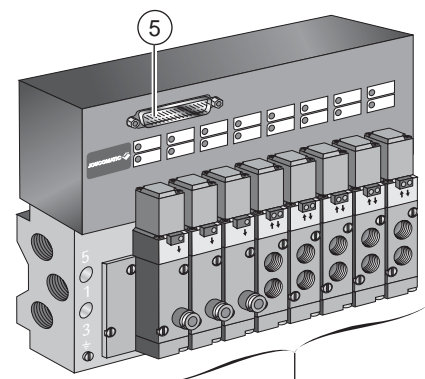
Version with input modules
(example: BUSLINK, PROFIBUS - DP)



MULTIPOL system

Connection between a PLC and the spool valve island with a multiwire cable (36 wires) and a SUB-D connector (37 pins).

Version without input modules
(example: MULTIPOL)



- ① Spool valves
- ② Module for Bus or Multipol connection
- ③ Module with 8 inputs
- ④ Module with 16 inputs
- ⑤ 37-pin SUB-D connector for supply of spool valve coils

CHARACTERISTICS

- **Standard** version (BUSLINK or MULTIPOL): Island of 4 to 16 monostable or bistable 3/2, 2x3/2, 5/2, 5/3 spool valves, ØM5 - G1/8 - G1/4 or Ø4-6 mm O.D instant fittings.
- Special BUSLINK spool valve island versions are available for use in **potentially explosive atmospheres** caused by dusts or gases in accordance with ATEX Directive 94/9/EC. The islands can be used to pilot valves installed in zone 2-22. Their aluminium components and IP65 protection rating allow them to be installed close to the actuators, without the need of a control box.
Classification: **Ex II 3 GD EEx nA II T5 IP65 T90°C**
- Island of 4 to 15 monostable or bistable 3/2, 5/2 or 5/3 spool valves, ØM5 - G1/8 - G1/4 or Ø4-6 mm O.D instant fittings.
- Integrated connections
- Power supply: 24 V DC
- Visual indicator (LED) for each coil and each input
- Common pressure supply to all valves
- Built-in exhaust outlet in the subbase for environmental protection
- Versions with or without inputs for sensor status display

Spool valve island especially designed to receive miniature spool valves with **integrated push/pull pilot valves** placed with collected ports **on one side** of the island offering a compact solution as shown opposite.

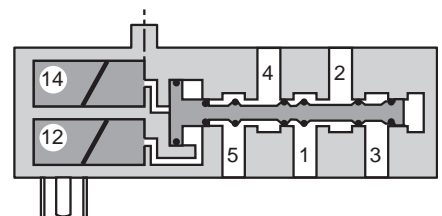
Adaptable valves:

Monostable or bistable 3/2 - 2x3/2 (standard version only) - 5/2 - 5/3 spool valves with high flow rates and small dimensions (2x3/2 NC, series 570 only)

- ØM5 (1) (series 569) - flow rate: **175** l/min (ANR)
- G1/8 (1) (series 570) - flow rate: **600** l/min (ANR) (2)
- G1/4 (series 571) - flow rate: **1050** l/min (ANR)

(1) or instant fittings for flexible hose

(2) 400 l/min for 3/2 NC function - 550 l/min for 2x3/2 NC function



All leaflets are available on: www.asco-process-scope.com