

FEATURES

- Compact in design
- In-line mounted
- Quiet operation
- Instantaneous shut off against reverse flow, low forward pressure opening
- Disc seats before reverse flow to avoid fluid shock on reverse pressure differential
- The solenoid valves satisfy all relevant EC Directives

GENERAL

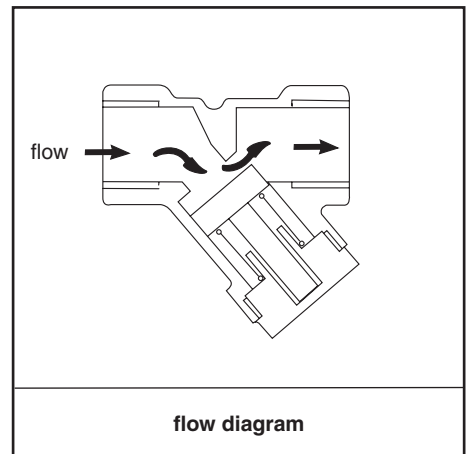
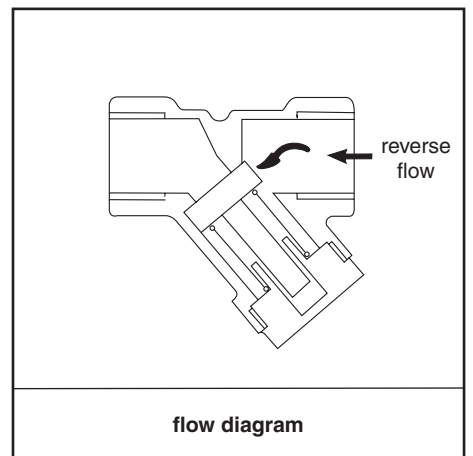
Differential pressure 0,07 - 10 bar [1 bar = 100kPa]
Maximum viscosity 65cST (mm²/s)

| fluids (*) | temperature range (TS) | seal material (*) |
|----------------------------|------------------------|-------------------|
| air, inert gas, water, oil | -20°C to + 90°C | NBR (nitrile) |

MATERIALS IN CONTACT WITH FLUID

(*) Ensure that the compatibility of the fluids in contact with the materials is verified

| | Brass body | Stainless steel body |
|----------------------|-----------------|----------------------|
| Body and seat | Brass | AISI 300 SS |
| Springs | Stainless steel | Stainless steel |
| Sealings | NBR | NBR |
| Discs | NBR | NBR |
| Disc holder | Brass | Stainless steel |



SPECIFICATIONS

| pipe size | orifice size | flow coefficient Kv | | operating pressure differential (bar) | | basic catalogue number | type |
|-----------------------------|--------------|---------------------|---------|---------------------------------------|-----------|------------------------|------|
| | | | | min. | max. (PS) | | |
| ∅ | (mm) | (m ³ /h) | (l/min) | air/water (*) | | | |
| Brass body | | | | | | | |
| 1/4 | 7 | 0,60 | 10,0 | 0,07 | 10 | V012A001 | 01 |
| 3/8 | 10 | 1,03 | 17,2 | 0,07 | 10 | V012A002 | 02B |
| 1/2 | 11 | 2,14 | 35,7 | 0,07 | 10 | V012A003 | 02C |
| 3/4 | 13 | 3,10 | 51,7 | 0,07 | 10 | V012A004 | 02D |
| Stainless Steel body | | | | | | | |
| 1/4 | 7 | 0,60 | 10,0 | 0,07 | 10 | V012A005 | 03 |
| 3/8 | 10 | 1,03 | 17,2 | 0,07 | 10 | V012A006 | 02B |
| 1/2 | 11 | 2,14 | 35,7 | 0,07 | 10 | V012A007 | 02C |

All leaflets are available on: www.asconumatics.eu

SUFFIX TABLE

| suffix | | | | | description |
|--------|---|---|---|---|---|
| 1 | 2 | 3 | 4 | 5 | |
| V | G | D | | | Non-electrical, 2GD c, construction safety, gas/dust (EN 13463-5) FPM (fluorelastomer) |

PRODUCT SELECTION GUIDE

STEP 1

Select basic catalogue number. Refer to the specifications table on page 1

Example: V012A005

STEP 2

Select suffix (combination) if required. Refer to the suffix table on page 2

Example: V

STEP 3

Final catalogue / ordering number

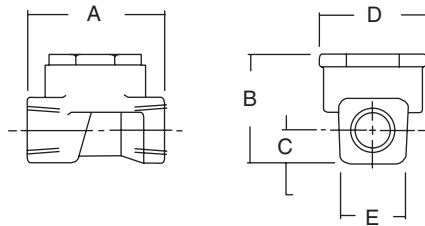
Example:

V012A005V

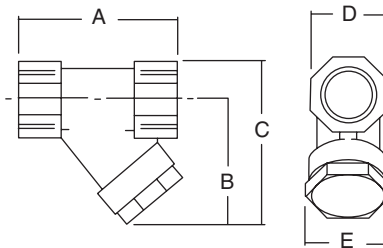
DIMENSIONS (mm), WEIGHT (kg)



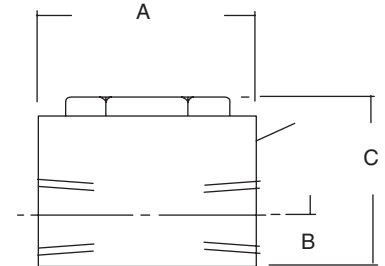
TYPE 01



TYPE 02 (B/C/D)



TYPE 03



| type | A | B | C | D | E | weight |
|------|----|-----|-----|----|----|---------|
| 01 | 40 | 32 | 9,5 | 32 | 20 | 0,15 kg |
| 02B | 49 | 42 | 30 | 22 | 30 | 0,25 kg |
| 02C | 58 | 47 | 30 | 28 | 30 | 0,25 kg |
| 02D | 70 | 47 | 33 | 33 | 33 | 0,50 kg |
| 03 | 42 | 9,5 | 32 | - | - | 0,15 kg |

INSTALLATION

- Installation/maintenance instructions are included with each valve
- The solenoid valves can be mounted in any position without affecting operation
- Threaded pipe connection connections are NPT (ANSI 1.20.3)
- Declarations of conformity are available on request

All leaflets are available on: www.asconumatics.eu