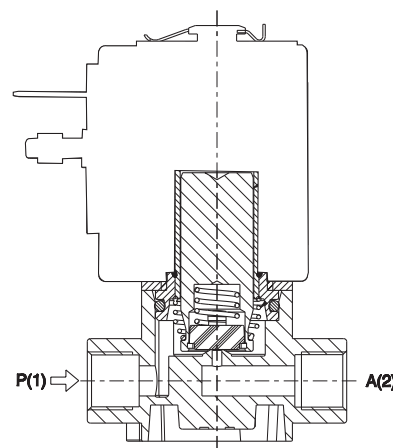
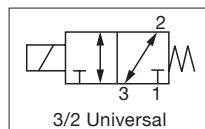
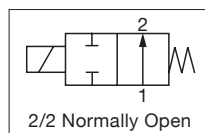
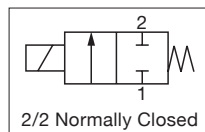


ASCO™ MINIATURE SOLENOID VALVES

GENERAL SERVICE VALVES

SERIES
L123 / L257 / L323

- Direct acting solenoid valve.
- Suitable to shut off liquid and gaseous fluids; suitable for low pressure steam and applications in sterilising autoclaves (verify the compatibility of materials with fluids in contact).
- Typical applications include
 - Dental equipment
 - Steam sterilizers
 - Bio-medical analyzers
 - Low pressure steam



General Valve Information	
Body	PPS
Seals*	FKM
Internal Components	Stainless Steel Stainless Steel and PPS
Seat	PPS
Core Tube	Stainless Steel
Shading coil	Copper
Fluids	Liquids or gases
Fluid temperature	0°C +130°C
Differential pressure	see "Specifications" [1 bar = 100 kPa]
Response time	~ 20ms
Max. Viscosity	37 cSt (mm²/s)

* Ensure that the compatibility of the materials in contact with the fluids is verified

Electrical Characteristics					
	ZA10A (UL class F - for UL cl.H: ZA34 (E153691))	ZA10B (UL class F - for UL cl.H: ZA34 (E153691))	ZA10G (UL class F - for UL cl.H: ZA34 (E153691))		
Continuous duty	ED 100%	ED 100%	ED 100%		
Coil Insulation Class	F (155°C) on request class H (180°C)	F (155°C)	F (155°C) on request class H (180°C)		
Connector	DIN 46340 - 3 pole connector (EN175301-803)	DIN 46340 - 3 pole connector (EN175301-803)	DIN 46340 - 3 pole connector (EN175301-803)		
Encapsulation material	PPS (polyphenylsulfure) fiberglass reinforced	PET (polyethylene-terephthalate) fiberglass reinforced	PPS (polyphenylsulfure) fiberglass reinforced		
Electrical Enclosure Protection	IP67 (EN60529) with plug connector	IP65 (EN60529) with plug connector	IP67 (EN60529) with plug connector		
Standard Voltages*	DC	12-24 V (+10% -5%)	24V (+10% -5%) (UL)	12-24 V (+10% -5%)	
	AC	24V/50Hz - 110V/50Hz (120V/60Hz) - 230V/50Hz (+10% -15%)			

* other voltages and frequencies on request

01094GB-2019-R01

Visit our website at emerson.com

Availability, design and specifications are subject to change without notice. All rights reserved.

Specifications																					
Pipe Connection	Orifice Size	Flow Coefficient		Operating Pressure, bar				Power Rating (W)			Catalog Number		Sealing Materials*	Notes							
				min.	max.				AC (VA)		DC (W)	Threaded Body									
					Gases		Liquids		Inrush	Holding					Coil						
					AC	DC	AC	DC													
mm	Kv (m ³ /h)	Cv	AC	DC	AC	DC	Inrush	Holding		Coil											
2/2 NC - Normally Closed																					
G1/8	1.6	0.09	0.10	0	10	10	10	10	23	14	9	L123V01	ZA10A	FKM	1,2,3						
	2.3	0.15	0.17		10	10	10	10													
	3.2	0.25	0.29		10	4	10	4													
Barbed ports	1.6	0.09	0.10		10	10	10	10				L123V02			2,3						
	2.3	0.15	0.17		10	10	10	10													
	3.2	0.25	0.29		10	4	10	4													
Barbed ports with ring nut	1.6	0.09	0.10		10	10	10	10				L123V03			2,3,4						
	2.3	0.15	0.17		10	10	10	10													
	3.2	0.25	0.29		10	4	10	4													
Barbed ports	2.3	0.15	0.17		10	10	10	10				L132V04			3,5						
	3.2	0.25	0.29		10	4	10	4													
2/2 NO - Normally Open																					
G1/8	3	0.18	0.21	0	3	3	3	3	23	14	9	L257V02	ZA10A	FKM	1, 3,5						
Barbed ports												L257V01				2,3					
Barbed ports with ring nut		L257V03	2,3,4																		
G1/4	4.2	0.33			0.38	2.5	2.5	2.5				2.5			23	14	10	L257V04	ZA10A	1,3	
			2.5			2.5	2.5	2.5				23			14	10	L257V05	ZA10B			
Barbed ports		0.26	0.30		2.5	2.5	2.5	2.5				23			14	10	L257V05	ZA10A	3		
					2.5	2.5	2.5	2.5				23			14	10	L257V05	ZA10B			
Barbed ports		2.5	0.14		0.16	5	5	5				5			23	14	9	L257V06	ZA10A		2,3
		3	0.18		0.21	3	3	3				3									
3/2 U - Universal																					
G1/8	2.3	0.2	0.23		0	4	4	4				4			23	14	12	L323V01G	ZA10A	FKM	1,2,3
Barbed ports						4	4	4				4			23	14	12		L323V02G		
				Barbed ports with ring nut		0.12	0.14	4	4	4	4	23	14	12	L323V03G	ZA10A	2,3,4				
4								4	4	4	23	14	12	L323V04G	ZA10G						
Barbed ports				0.2		0.23	4	4	4	4	23	14	12	L323V04G	ZA10A	2,3					
							4	4	4	4	23	14	12	L323V04G	ZA10G						

* Sealings: FKM = Fluoro-carbon elastomer

1 Maximum driving torque of the pipe fittings for thread connections = 2Nm

2 Only for use with steam, consider following values: PSmax 2.8 bar (max fluid temperature 130°)

3 The pressure values shown in the table refer to the potential of the valve: they can be lower depending on the connection system used

4 Maximum driving torque of ring nut 1.2Nm

5 Only for use with steam, consider following values: PSmax 2.8 bar (max fluid temperature 130°)

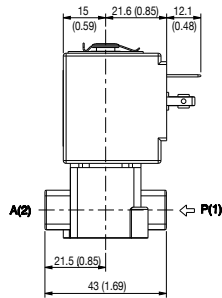
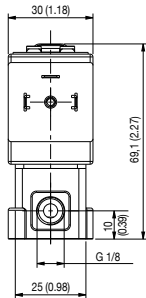
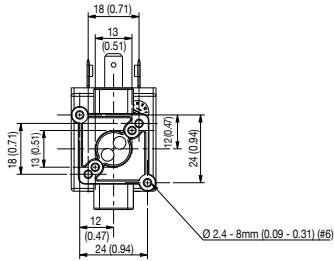
ASCO™ MINIATURE SOLENOID VALVES

GENERAL SERVICE VALVES

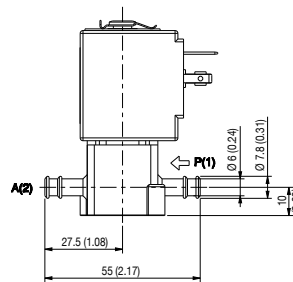
SERIES
L123/L257/L323

Dimensions: mm (inches)

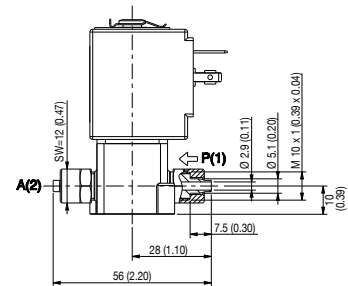
L123V01



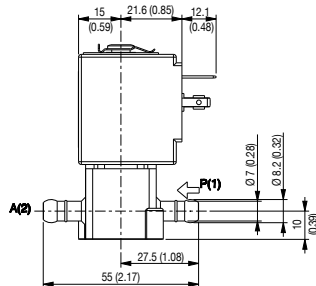
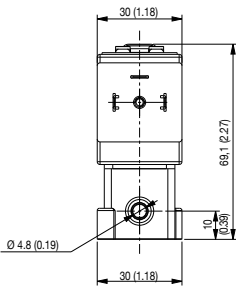
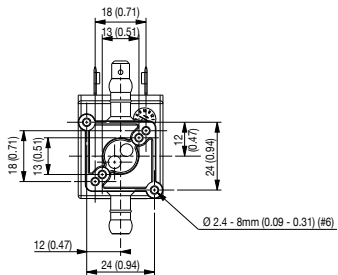
L123V02



L123V03



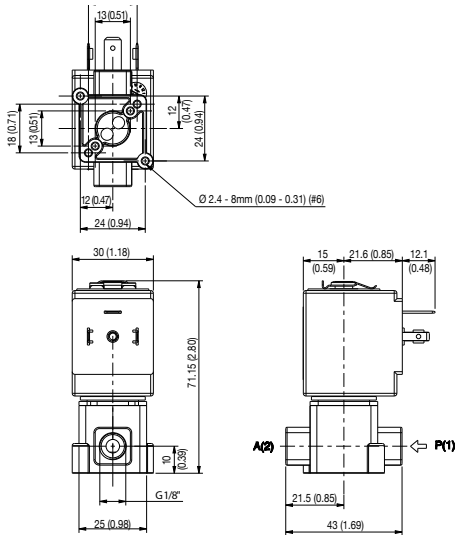
L123 V04



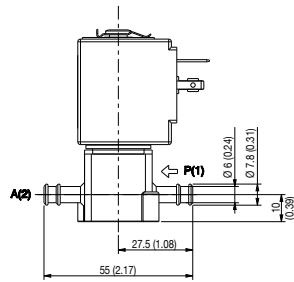
01094GB-2019-R01

Dimensions: mm (inches)

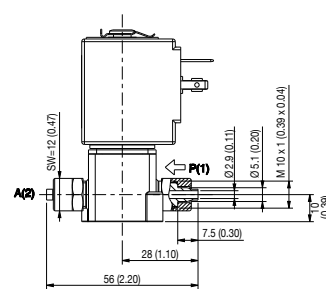
L257V02



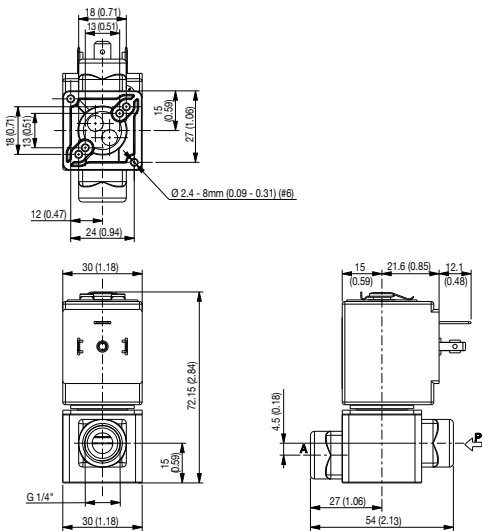
L257V01



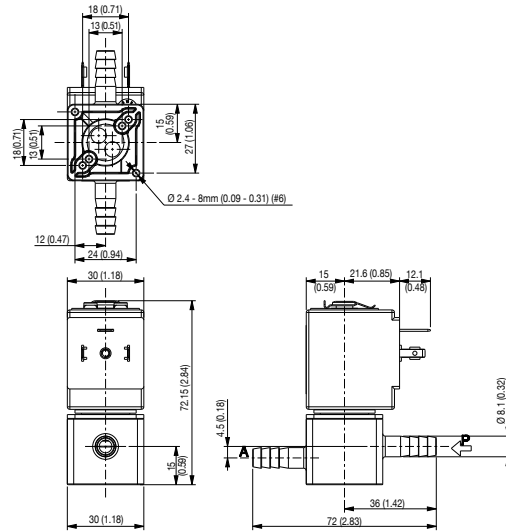
L257V03



L257V04



L257V05



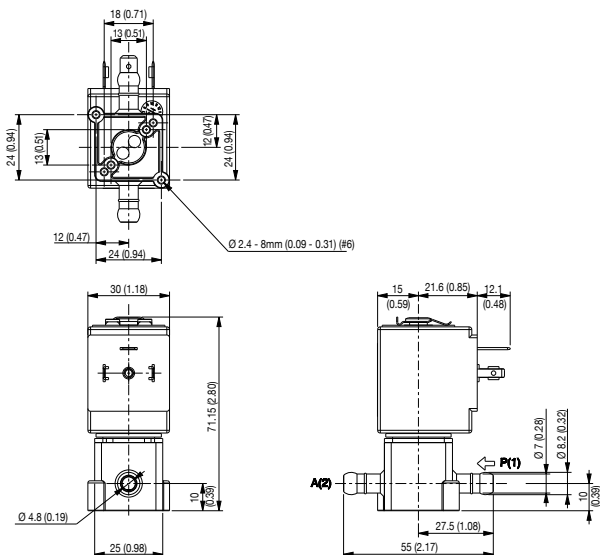
ASCO™ MINIATURE SOLENOID VALVES

GENERAL SERVICE VALVES

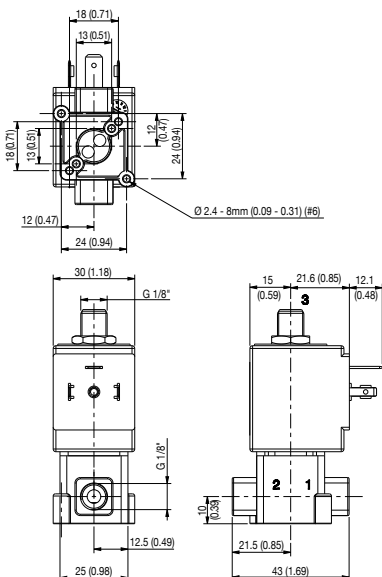
SERIES
L123/L257/L323

Dimensions: mm (inches)

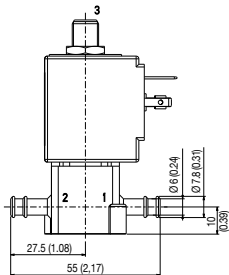
L257V06



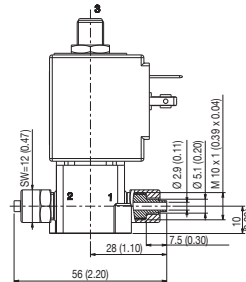
L323V01G



L323V02G



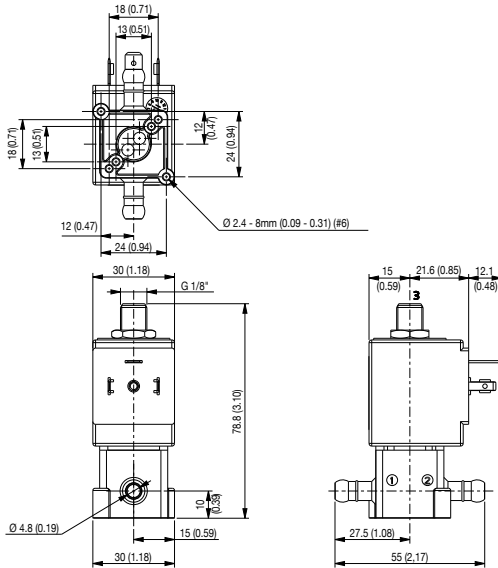
L323V03G



01094GB-2019-R01

Dimensions: mm (inches)

L323-V04G



Spare Part Kits

L123-V01/V02/V03/V04

Kit description	Kit P.N.	Consisting of:
Core kit	G3139401	Core
Core return spring kit	G3022401	N.10 core return spring
O-Ring guide assembly kit	GU2428000017	N.10 O-Ring guide assembly
Guide assembly kit	G31487	Guide assembly Coil clip
Coil	ZA10A	Coil

L257-V01/V02/V03

Kit description	Kit P.N.	Consisting of:
Core kit	G3138301	Core return spring Core O-Ring guide assembly Pusher Sealing disc return spring Sealing disc
Core return spring kit	G290513-001	N°.10 Core return spring
O-Ring guide assembly kit	GU2428000015	N°.10 OR guide assembly
Guide assembly kit	G31488	Guide assembly Coil clip
Coil	ZA10A	Coil

L257-V04 / L257-V05

Kit description	Kit P.N.	Consisting of:
Core kit	G3138301	Core return spring Core O-Ring guide assembly Pusher Sealing disc return spring Sealing disc
Core return spring kit	G290513-001	N°.10 Core return spring
O-Ring guide assembly kit	GU2428000015	N°. 10 OR guide assembly
Guide assembly kit	G31488	Guide assembly Coil clip
Coil	ZA10A ZA10B	Coil

L257-V06

Kit description	Kit P.N.	Consisting of:
Core kit	G3138301	Core return spring Core O-Ring guide assembly Pusher Sealing disc return spring Sealing disc
Core return spring kit	G290513-001	N°.10 Core return spring
O-Ring guide assembly kit	GU2428000015	N°. 10 OR guide assembly
Guide assembly kit	G31488	Guide assembly Coil clip
Coil	ZA10A	Coil

L323-V01G/V02G/V03G/V04G

Kit description	Kit P.N.	Consisting of:
Core kit	G3065101	Core
Core return spring kit	G3022401	N.10 core return spring
O-Ring guide assembly kit	GU2428000017	N.10 O-Ring guide assembly
Guide assembly	290564-001R	Guide assembly
Coil	ZA10A ZA10G	Coil

Installation

- Solenoid valve can be mounted in any position; vertical with coil upwards preferred.
- When using any sealant for fittings, please check its chemical compatibility with body material (PPS).
- In case of disassembling for usual maintenance, the fixing screws of the guide assembly have to be tightened with 0.6±0.7 Nm torque.

01094GB-2019-F01

