

Series QR1



AVENTICS™ Series QR1

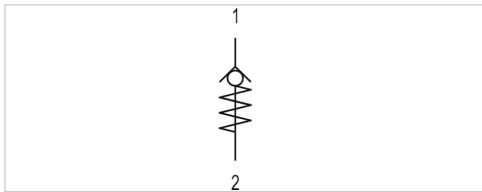


Non-return valve, Series QR1-ANR

- Qn 1→2 = 280-900 l/min
- push-in fitting
- Ø 4 Ø 6 Ø 8
- External thread
- G 1/8 G 1/4



Version	Poppet valve
Working pressure min./max.	0.8 ... 10 bar
Ambient temperature min./max.	0 ... 60 °C
Medium temperature min./max.	0 ... 60 °C
Medium	Compressed air
Weight	See table below



Technical data

Part No.	Port 1	Port 2	Flow	Delivery unit	Weight
			Qn 1→2		
R412005565	Ø 4	G 1/8	280 l/min	5 piece	0.01 kg
R412005566	Ø 6	G 1/8	600 l/min	5 piece	0.013 kg
R412005568	Ø 6	G 1/4	600 l/min	5 piece	0.02 kg
R412005569	Ø 8	G 1/4	900 l/min	5 piece	0.021 kg

Nominal flow Qn at 6 bar and Δp = 1 bar

Technical information

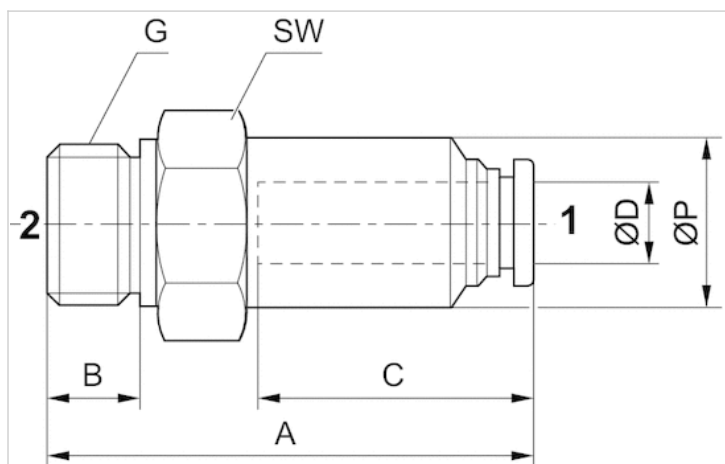
Flow direction from tubing to threads

Technical information

Material	
Housing	Brass, nickel-plated
Seals	Acrylonitrile butadiene rubber

Dimensions

Dimensions



Dimensions

Part No.	G	Ø D	A	B	C	SW	Ø P
R412005565	Ø 4	G 1/8	25.8	5	16	14	9.6
R412005566	Ø 6	G 1/8	26.8	5	17	14	11.6
R412005568	Ø 6	G 1/4	30.2	6	17	17	11.6
R412005569	Ø 8	G 1/4	32.6	6	18.5	17	13.6

Blocking valve, Series QR1-AAN

- Qn 1→2 = 300-900 l/min
- External thread
- G 1/8 G 1/4
- push-in fitting
- Ø 4 Ø 6 Ø 8



Version	Poppet valve
Working pressure min./max.	0 ... 10 bar
Ambient temperature min./max.	0 ... 60 °C
Medium temperature min./max.	0 ... 60 °C
Medium	Compressed air
Weight	See table below



Technical data

Part No.	Port 1	Port 2	Flow	Delivery unit	Weight
			Qn 1→2		
R412005526	G 1/8	Ø 4	300 l/min	10 piece	0.011 kg
R412005527	G 1/8	Ø 6	700 l/min	10 piece	0.013 kg
R412005528	G 1/4	Ø 6	700 l/min	10 piece	0.021 kg
R412005529	G 1/4	Ø 8	900 l/min	10 piece	0.02 kg

Nominal flow Qn at 6 bar and $\Delta p = 1$ bar

Technical information

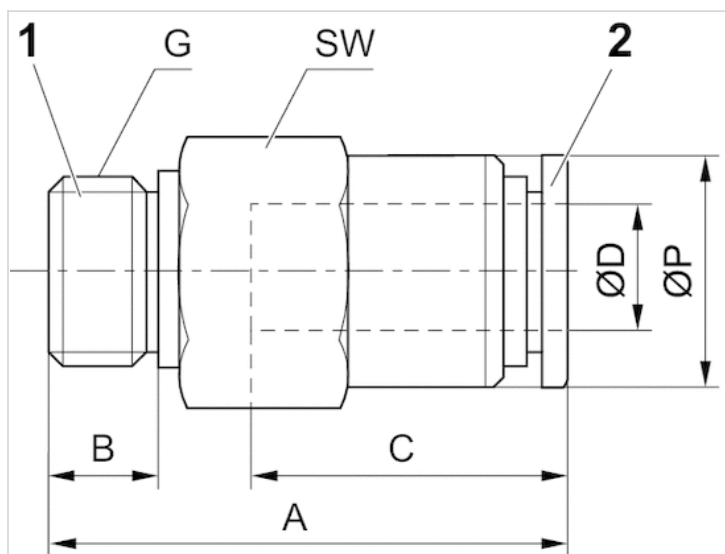
When connecting/disconnecting the compressed air tubing and shut-off valve, the flow is released/blocked.

Technical information

Material	
Housing	Brass, nickel-plated
Seals	Acrylonitrile butadiene rubber

Dimensions

Dimensions



Dimensions

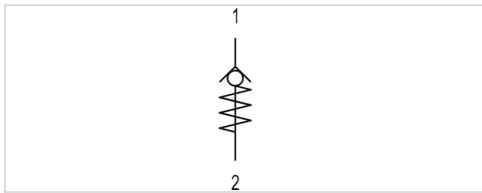
Part No.	G	Ø D	A	B	C	SW	Ø P
R412005526	G 1/8	Ø 4	26.6	5	16	14	10
R412005527	G 1/8	Ø 6	26.9	5	17	14	12
R412005528	G 1/4	Ø 6	29.4	6	17	17	13
R412005529	G 1/4	Ø 8	33.8	6	18.5	17	14

Non-return valve, Series QR1-SKR

- Qn 1→2 = 280-2000 l/min
- push-in fitting
- Ø 4 Ø 6 Ø 8 Ø 10 Ø 12
- push-in fitting
- Ø 4 Ø 6 Ø 8 Ø 10 Ø 12



Version	Poppet valve
Working pressure min./max.	0.8 ... 10 bar
Ambient temperature min./max.	0 ... 60 °C
Medium temperature min./max.	0 ... 60 °C
Weight	See table below



Technical data

Part No.	Port 1	Port 2	Flow	Housing material	Delivery unit	Weight
			Qn 1→2			
R412005573	Ø 4	Ø 4	280 l/min	Polybutyleneterephthalate	5 piece	0.006 kg
R412005574	Ø 6	Ø 6	600 l/min	Polybutyleneterephthalate	5 piece	0.009 kg
R412005575	Ø 8	Ø 8	1800 l/min	Polybutyleneterephthalate	5 piece	0.014 kg
R412005576	Ø 10	Ø 10	1800 l/min	Aluminum	2 piece	0.018 kg
R412005577	Ø 12	Ø 12	2000 l/min	Aluminum	2 piece	0.033 kg

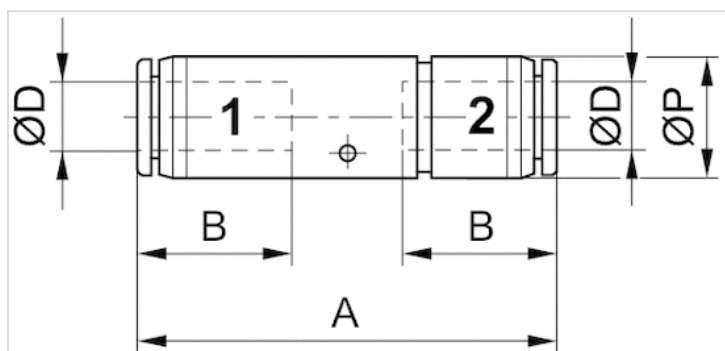
Nominal flow Qn at 6 bar and Δp = 1 bar

Technical information

Material	
Housing	Polybutyleneterephthalate Aluminum
Seals	Acrylonitrile butadiene rubber

Dimensions

Dimensions



Dimensions

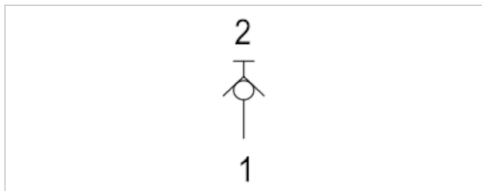
Part No.	Ø D	Ø D	A	B	Ø P
R412005573	Ø 4	Ø 4	41.1	16	10
R412005574	Ø 6	Ø 6	47.2	17	12.4
R412005575	Ø 8	Ø 8	51.6	18.5	14.4
R412005576	Ø 10	Ø 10	77.3	21	25
R412005577	Ø 12	Ø 12	80	22.5	25

Blocking valve, Series QR1-ASK

- Qn 1→2 = 300-1500 l/min
- push-in fitting
- Ø 4 Ø 6 Ø 8 Ø 10
- push-in fitting
- Ø 4 Ø 6 Ø 8 Ø 10



Version	Poppet valve
Working pressure min./max.	0 ... 10 bar
Ambient temperature min./max.	0 ... 60 °C
Medium temperature min./max.	0 ... 60 °C
Medium	Compressed air
Weight	See table below



Technical data

Part No.	Port 1	Port 2	Flow	Housing material	Delivery unit	Weight
			Qn 1→2			
R412005547	Ø 4	Ø 4	300 l/min	Polybutyleneterephthalate	10 piece	0.007 kg
R412005548	Ø 6	Ø 6	700 l/min	Polybutyleneterephthalate	10 piece	0.008 kg
R412005549	Ø 8	Ø 8	900 l/min	Polybutyleneterephthalate	10 piece	0.013 kg
R412005550	Ø 10	Ø 10	1500 l/min	Aluminum	10 piece	0.023 kg

Nominal flow Qn at 6 bar and Δp = 1 bar

Technical information

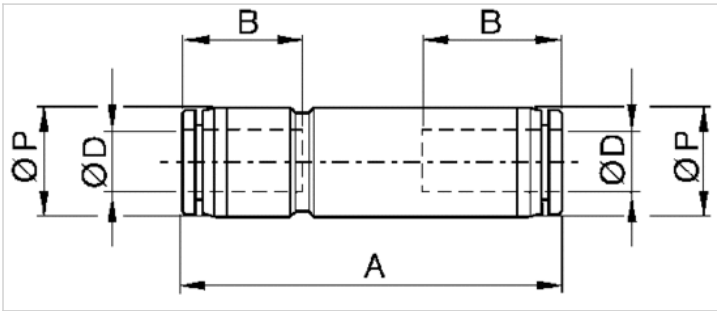
When connecting/disconnecting the compressed air tubing and shut-off valve, the flow is released/blocked.

Technical information

Material	
Housing	Polybutyleneterephthalate Aluminum
Seals	Acrylonitrile butadiene rubber

Dimensions

Dimensions



Dimensions

Part No.	Ø D	Ø G	A	B	Ø P
R412005547	Ø 4	Ø 4	42.9	16	10
R412005548	Ø 6	Ø 6	46.9	17	12.4
R412005549	Ø 8	Ø 8	52.6	18.5	14.4
R412005550	Ø 10	Ø 10	59.2	21	17.6

Efficient pneumatic solutions, our program: cylinders and drives, valves and valve systems, air supply management



Visit us: Emerson.com/Aventics

Your local contact: Emerson.com/contactus



Emerson.com



Facebook.com/EmersonAutomationSolutions



LinkedIn.com/company/Emerson-Automation-Solutions



Twitter.com/EMR_Automation

An example configuration is depicted on the title page. The delivered product may thus vary from that in the illustration. Subject to change. This Document, as well as the data, specifications and other information set forth in it, are the exclusive property of AVENTICS GmbH. It may not be reproduced or given to third parties without its consent. Only use the AVENTICS products shown in industrial applications. Read the product documentation completely and carefully before using the product. Observe the applicable regulations and laws of the respective country. When integrating the product into applications, note the system manufacturer's specifications for safe use of the product. The data specified only serve to describe the product. No statements concerning a certain condition or suitability for a certain application can be derived from our information. The information given does not release the user from the obligation of own judgment and verification. It must be remembered that the products are subject to a natural process of wear and aging.

The Emerson logo is a trademark and service mark of Emerson Electric Co. Brand logotype are registered trademarks of one of the Emerson family of companies. All other marks are the property of their respective owners. © 2017 Emerson Electric Co. All rights reserved.
2019-03



CONSIDER IT SOLVED™



青岛秉诚自动化设备有限公司
地址：中国·青岛市重庆南路99号海尔云街甲3号楼7F

服务热线：4006-918-365
网址：<http://www.ivalve.cc>

传真：(86-532)585-10-365
Email：sales@bechinas.com