

QR1



AVENTICS™ QR1-S standard series

BCAE
Automation Solutions

青岛秉诚自动化设备有限公司
地址：中国·青岛市重庆南路99号海尔云街甲3号楼7F

服务热线：4006-918-365
网址：<http://www.ivalve.cc>


EMERSON™
传真：(86-532)585-10-365
Email：sales@bechinas.com

Series QR1

- Ambient temperature 0 ... 60°C
- Operating pressure 0 ... 10 bar
- Cylindrical threads
- Versions for high temperature applications with increased corrosion resistance (QR2-F and QR2-C)
- Optimum sealing, also after repeated release, through captive O-ring
- Due to product optimisation, the delivered article may currently deviate from the dimensions shown.



QR1-S-RPN standard series

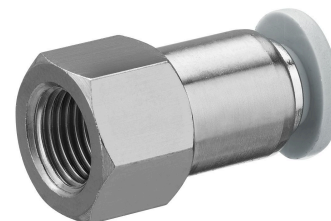
Straight fitting



G	Ø D	Delivery unit [piece]	Part No.
M5	Ø 4	10	2121004050
M5	Ø 6	10	2121006050
G 1/8	Ø 4	10	2121004180
G 1/8	Ø 6	10	2121006180
G 1/8	Ø 8	10	2121008180
G 1/8	Ø 10	10	R412005002
G 1/8	Ø 12	10	R412005003
G 1/4	Ø 4	10	2121004140
G 1/4	Ø 6	10	2121006140
G 1/4	Ø 8	10	2121008140
G 1/4	Ø 10	10	2121010140
G 1/4	Ø 12	10	2121012140
G 3/8	Ø 6	10	R412005000
G 3/8	Ø 8	10	2121008380
G 3/8	Ø 10	10	2121010380
G 3/8	Ø 12	10	2121012380
G 3/8	Ø 14	10	2121014380
G 3/8	Ø 16	10	R412005005
G 1/2	Ø 8	10	R412005001
G 1/2	Ø 10	10	2121010120
G 1/2	Ø 12	10	2121012120
G 1/2	Ø 14	10	2121014120
G 1/2	Ø 16	10	R412005006

QR1-S-RAI standard series

Straight female stud fitting



G	Ø D	Delivery unit [piece]	Part No.
G 1/8	Ø 4	10	2121904180
G 1/8	Ø 6	10	2121906180
G 1/8	Ø 8	10	2121908180
G 1/4	Ø 4	10	R412005085
G 1/4	Ø 6	10	2121906140
G 1/4	Ø 8	10	2121908140
G 1/4	Ø 10	10	R412005089
G 1/4	Ø 12	10	R412005091
G 3/8	Ø 6	10	R412005086
G 3/8	Ø 8	10	R412005087
G 3/8	Ø 10	10	2121910380
G 3/8	Ø 12	10	2121912380
G 1/2	Ø 10	10	R412005090
G 1/2	Ø 12	10	2121912120

QR1-S-RAS standard series

Push-in connector

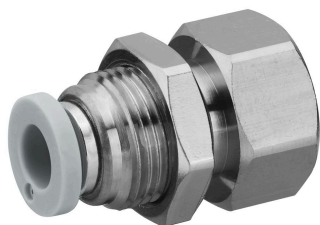


G	Ø D	Delivery unit [piece]	Part No.
M5	Ø 4	10	2121604050
M5	Ø 6	10	R412005068
G 1/8	Ø 4	10	2121604180
G 1/8	Ø 6	10	2121606180
G 1/8	Ø 8	10	R412005071

G	Ø D	Delivery unit [piece]	Part No.
G 1/4	Ø 6	10	2121606140
G 1/4	Ø 8	10	2121608140
G 1/4	Ø 10	10	R412005072
G 1/4	Ø 12	10	R412005073
G 3/8	Ø 10	10	2121610380
G 3/8	Ø 12	10	R412005074
G 1/2	Ø 10	10	2121610120
G 1/2	Ø 12	10	2121612120
G 1/2	Ø 14	5	R412005076
G 1/2	Ø 16	5	R412005078

QR1-S-RSI standard series

Bulkhead connector



G	Ø D	Delivery unit [piece]	Part No.
G 1/8	Ø 4	10	2122604180
G 1/8	Ø 6	10	2122606180
G 1/8	Ø 8	10	R412005232
G 1/4	Ø 6	10	2122606140
G 1/4	Ø 8	10	2122608140
G 1/4	Ø 10	10	R412005233
G 3/8	Ø 8	10	R412005231
G 3/8	Ø 10	10	2122610380
G 3/8	Ø 12	10	R412005235
G 1/2	Ø 12	10	2122612120

QR1-S-RVT standard series

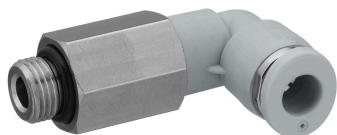
Elbow fitting



G	Ø D	Delivery unit [piece]	Part No.
M5	Ø 4	10	2122004050
M5	Ø 6	10	2122006050
G 1/8	Ø 4	10	2122004180
G 1/8	Ø 6	10	2122006180
G 1/8	Ø 8	10	2122008180
G 1/8	Ø 10	10	R412005094
G 1/8	Ø 12	10	R412005095
G 1/4	Ø 4	10	2122004140
G 1/4	Ø 6	10	2122006140
G 1/4	Ø 8	10	2122008140
G 1/4	Ø 10	10	2122010140
G 1/4	Ø 12	10	2122012140
G 3/8	Ø 6	10	R412005092
G 3/8	Ø 8	10	2122008380
G 3/8	Ø 10	10	2122010380
G 3/8	Ø 12	10	2122012380
G 3/8	Ø 14	5	2122014380
G 3/8	Ø 16	5	R412005097
G 1/2	Ø 8	10	R412005093
G 1/2	Ø 10	10	2122010120
G 1/2	Ø 12	10	2122012120
G 1/2	Ø 14	5	2122014120
G 1/2	Ø 16	5	R412005098

QR1-S-RVL standard series

Long elbow fitting

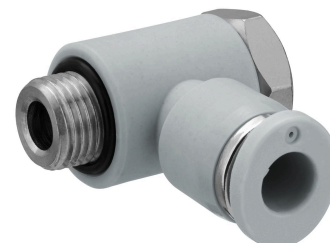


G	Ø D	Delivery unit [piece]	Part No.
G 1/4	Ø 8	10	R412005134
G 1/4	Ø 10	10	R412005135

G	Ø D	Delivery unit [piece]	Part No.
M5	Ø 4	10	2122104050
M5	Ø 6	10	R412005099
G 1/8	Ø 4	10	2122104180
G 1/8	Ø 6	10	2122106180
G 1/8	Ø 8	10	2122108180
G 1/4	Ø 4	10	2122104140
G 1/4	Ø 6	10	2122106140
G 1/4	Ø 8	10	2122108140
G 1/4	Ø 10	10	2122110140
G 1/4	Ø 12	10	R412005103
G 3/8	Ø 8	10	2122108380
G 3/8	Ø 10	10	2122110380
G 3/8	Ø 12	10	R412005104
G 1/2	Ø 12	10	R412005105

QR1-S-RW1 standard series

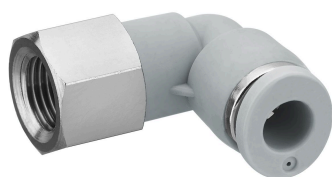
Swivel banjo connection 1-fold



G	Ø D	Delivery unit [piece]	Part No.
M5	Ø 4	10	R412005236
M5	Ø 6	10	R412005238
G 1/8	Ø 4	10	R412005237
G 1/8	Ø 6	10	R412005239
G 1/8	Ø 8	10	R412005240
G 1/4	Ø 6	10	R412005241
G 1/4	Ø 8	10	R412005242
G 1/4	Ø 10	10	R412005243
G 3/8	Ø 8	5	R412005244
G 3/8	Ø 10	5	R412005245
G 3/8	Ø 12	5	R412005246

QR1-S-RVI standard series

Elbow screw fitting



G	Ø D	Delivery unit [piece]	Part No.
G 1/8	Ø 4	10	R412005129
G 1/8	Ø 6	10	R412005130
G 1/8	Ø 8	10	R412005131
G 1/4	Ø 4	10	R412005132
G 1/4	Ø 6	10	R412005133

QR1-S-RW2 standard series

Swivel banjo connection 2-fold



G	Ø D	Delivery unit [piece]	Part No.
G 1/8	Ø 4	10	R412005141
G 1/8	Ø 6	10	R412005144
G 1/8	Ø 8	10	R412005147

G	Ø D	Delivery unit [piece]	Part No.
G 1/4	Ø 6	10	R412005145
G 1/4	Ø 8	10	R412005148
G 3/8	Ø 8	10	R412005149
G 3/8	Ø 10	5	R412005152
G 1/2	Ø 12	5	R412005155

QR1-S-RW6 standard series

Swivel banjo connection 3-fold, double



G	Ø D	Delivery unit [piece]	Part No.
G 1/8	Ø 4	10	R412005186
G 1/8	Ø 6	10	R412005187
G 1/4	Ø 4	10	R412005189
G 1/4	Ø 6	10	R412005190
G 1/4	Ø 8	10	R412005191
G 3/8	Ø 6	10	R412005194
G 3/8	Ø 8	10	R412005195
G 3/8	Ø 10	5	R412005196

QR1-S-RID standard series

Swivel banjo connection 2-fold, with internal thread

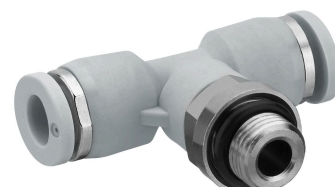


G	Ø D	Ø	Delivery unit [piece]	Part No.
M5	Ø 4	M5	10	R412005259
G 1/8	Ø 6	G 1/8	10	R412005260

G	Ø D	Ø	Delivery unit [piece]	Part No.
G 1/4	Ø 8	G 1/4	10	R412005261
G 3/8	Ø 10	G 3/8	5	R412005262

QR1-S-RTT standard series

T-union



G	Ø D	Delivery unit [piece]	Part No.
M5	Ø 4	10	2122204050
M5	Ø 6	10	R412005201
G 1/8	Ø 4	10	2122204180
G 1/8	Ø 6	10	2122206180
G 1/8	Ø 8	10	2122208180
G 1/8	Ø 10	10	R412005205
G 1/4	Ø 4	10	2122204140
G 1/4	Ø 6	10	2122206140
G 1/4	Ø 8	10	2122208140
G 1/4	Ø 10	10	2122210140
G 1/4	Ø 12	10	R412005206
G 3/8	Ø 6	10	R412005203
G 3/8	Ø 8	10	2122208380
G 3/8	Ø 10	10	2122210380
G 3/8	Ø 12	10	2122212380
G 3/8	Ø 14	10	2122214380
G 1/2	Ø 10	10	2122210120
G 1/2	Ø 12	5	2122212120
G 1/2	Ø 14	5	2122214120
G 1/2	Ø 16	5	R412005209

QR1-S-RTS standard series

T-Banjo connection



G	Ø D	Delivery unit [piece]	Part No.
G 1/2	Ø 12	5	2122312120

G	Ø D	Delivery unit [piece]	Part No.
G 1/8	Ø 6	10	R412005292
G 1/8	Ø 8	10	R412005293
G 1/4	Ø 6	10	R412005294
G 1/4	Ø 8	10	R412005295

QR1-S-RLT standard series

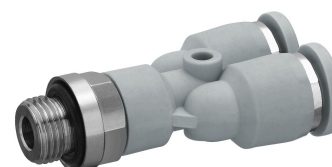
Elbow fitting



G	Ø D	Delivery unit [piece]	Part No.
M5	Ø 4	10	2122304050
M5	Ø 6	10	R412005212
G 1/8	Ø 4	10	2122304180
G 1/8	Ø 6	10	2122306180
G 1/8	Ø 8	10	R412005214
G 1/4	Ø 4	10	R412005211
G 1/4	Ø 6	10	2122306140
G 1/4	Ø 8	10	2122308140
G 1/4	Ø 10	10	R412005215
G 1/4	Ø 12	5	R412005216
G 3/8	Ø 8	10	2122308380
G 3/8	Ø 10	10	2122310380
G 3/8	Ø 12	5	2122312380
G 1/2	Ø 10	10	2122310120

QR1-S-RAY standard series

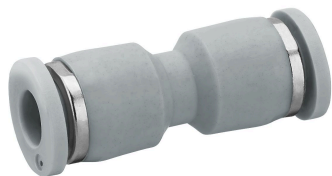
Y-fitting



G	Ø D	Delivery unit [piece]	Part No.
M5	Ø 4	10	2122404050
M5	Ø 6	10	R412005219
G 1/8	Ø 4	10	2122404180
G 1/8	Ø 6	10	2122406180
G 1/8	Ø 8	10	2122408180
G 1/4	Ø 4	10	2122404140
G 1/4	Ø 6	10	2122406140
G 1/4	Ø 8	10	2122408140
G 1/4	Ø 10	10	2122410140
G 3/8	Ø 8	10	R412005221
G 3/8	Ø 10	10	2122410380
G 3/8	Ø 12	10	2122412380
G 1/2	Ø 8	10	R412005222
G 1/2	Ø 10	10	2122410120
G 1/2	Ø 12	10	2122412120

QR1-S-RSK standard series

Straight plug connector



G	Ø D	Delivery unit [piece]	Part No.
Ø 4	Ø 4	10	2121504000
Ø 6	Ø 6	10	2121506000
Ø 8	Ø 8	10	2121508000
Ø 10	Ø 10	10	2121510000
Ø 12	Ø 12	10	2121512000
Ø 14	Ø 14	5	2121514000
Ø 16	Ø 16	5	R412005059

QR1-S-RSR standard series

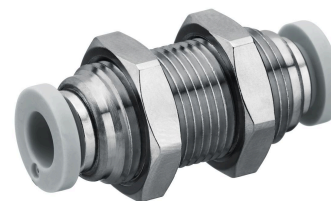
Straight plug connector, reducing



G	Ø D	Delivery unit [piece]	Part No.
Ø 6	Ø 4	10	R412005060
Ø 8	Ø 4	10	R412005061
Ø 8	Ø 6	10	R412005062
Ø 10	Ø 6	10	R412005063
Ø 10	Ø 8	10	R412005064
Ø 12	Ø 8	10	R412005065
Ø 12	Ø 10	10	R412005066
Ø 16	Ø 12	5	R412005067

QR1-S-RSM standard series

Bulkhead push-in fitting, metal



G	Ø D	Delivery unit [piece]	Part No.
Ø 4	Ø 4	10	2121404000
Ø 6	Ø 6	10	2121406000
Ø 8	Ø 8	10	2121408000
Ø 10	Ø 10	10	2121410000
Ø 12	Ø 12	10	2121412000

QR1-S-RSC standard series

Bulkhead plug connector, plastic



G	Ø D	Delivery unit [piece]	Part No.
Ø 4	Ø 4	10	R412005051
Ø 6	Ø 6	10	R412005052
Ø 8	Ø 8	10	R412005053
Ø 10	Ø 10	10	R412005054
Ø 12	Ø 12	10	R412005055

QR1-S-RVK standard series

Angled plug connector



G	Ø D	Delivery unit [piece]	Part No.
Ø 4	Ø 4	10	2121204000
Ø 6	Ø 6	10	2121206000
Ø 8	Ø 8	10	2121208000
Ø 10	Ø 10	10	2121210000
Ø 12	Ø 12	10	2121212000
Ø 14	Ø 14	5	2121214000
Ø 16	Ø 16	5	R412005033

QR1-S-RVS standard series

Angled bulkhead connector



G	Ø D	Delivery unit [piece]	Part No.
Ø 4	Ø 4	10	R412005056
Ø 6	Ø 6	10	R412005057
Ø 8	Ø 8	10	R412005375
Ø 10	Ø 10	10	R412005376

QR1-S-RMT standard series

Plug connector, 3x, reducing



G	Ø D	Delivery unit [piece]	Part No.
Ø 6	Ø 4	10	R412005346
Ø 8	Ø 4	10	R412005347
Ø 8	Ø 6	10	R412005348
Ø 10	Ø 6	10	R412005349
Ø 10	Ø 8	10	R412005350

QR1-S-RTK standard series

T-plug connector



G	Ø D	Delivery unit [piece]	Part No.
Ø 4	Ø 4	10	2121104000
Ø 6	Ø 6	10	2121106000
Ø 8	Ø 8	10	2121108000
Ø 10	Ø 10	10	2121110000
Ø 12	Ø 12	10	2121112000
Ø 14	Ø 14	5	2121114000
Ø 16	Ø 16	5	R412005025

QR1-S-RTR standard series

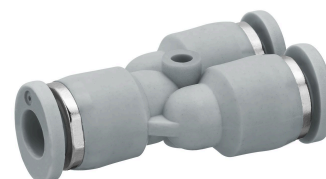
T-plug connector, reducing



G	Ø D	Delivery unit [piece]	Part No.
Ø 6	Ø 4	10	R412005026
Ø 8	Ø 4	10	R412005027
Ø 8	Ø 6	10	R412005028
Ø 10	Ø 6	10	R412005029
Ø 10	M8	10	R412005030
Ø 12	Ø 8	10	R412005031
Ø 12	Ø 10	10	R412005032

QR1-S-RYR standard series

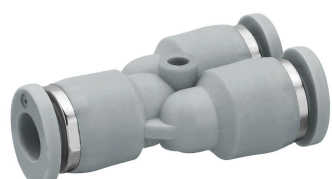
Y-Plug connector, reducing



G	Ø D	Delivery unit [piece]	Part No.
Ø 6	Ø 4	10	2121806040
Ø 8	Ø 4	10	R412005081
Ø 8	Ø 6	10	2121808060
Ø 10	Ø 6	10	R412005082
Ø 10	Ø 8	10	2121810080
Ø 12	Ø 8	10	R412005083
Ø 12	Ø 10	10	R412005080

QR1-S-RYK standard series

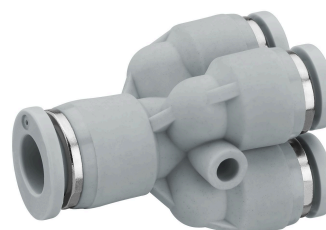
Y - Plug connection



G	Ø D	Delivery unit [piece]	Part No.
Ø 4	Ø 4	10	2121804000
Ø 6	Ø 6	10	2121806000
Ø 8	Ø 8	10	2121808000
Ø 10	Ø 10	10	2121810000
Ø 12	Ø 12	10	2121812000

QR1-S-RYD standard series

Y-Plug connector, reducing double



G	Ø D	Delivery unit [piece]	Part No.
Ø 6	Ø 4	10	R412005344
Ø 8	Ø 6	10	R412005345

QR1-S-RXS standard series

X-Plug connection



G	Ø D	Delivery unit [piece]	Part No.
Ø 4	Ø 4	10	R412005361
Ø 6	Ø 6	10	R412005362
Ø 8	Ø 8	10	R412005363
Ø 10	Ø 10	10	R412005364

QR1-S-RVA standard series

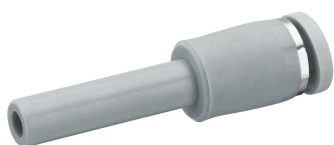
Angled plug-in connector



G	Ø D	Delivery unit [piece]	Part No.
Ø 4	Ø 4	10	2121304040
Ø 6	Ø 6	10	2121306060
Ø 8	Ø 8	10	2121308080
Ø 10	Ø 10	10	2121310100
Ø 12	Ø 12	10	R412005036

QR1-S-RED standard series

Straight push-in fitting, reducing



G	Ø D	Delivery unit [piece]	Part No.
Ø 4	Ø 6	10	2121706040
Ø 4	Ø 8	10	2121708040
Ø 4	Ø 10	10	2121710040
Ø 6	Ø 8	10	2121708060
Ø 6	Ø 10	10	2121710060
Ø 6	Ø 12	10	2121712060
Ø 8	Ø 10	10	2121710080
Ø 8	Ø 12	10	2121712080
Ø 8	Ø 14	10	2121714080
Ø 10	Ø 12	10	2121712100
Ø 10	Ø 14	10	2121714100
Ø 12	Ø 14	10	2121714120

QR1-S-RLL standard series

Angled plug-in connector



G	Ø D	Delivery unit [piece]	Part No.
Ø 4	Ø 4	10	R412005039
Ø 6	Ø 6	10	R412005040
Ø 8	Ø 8	10	R412005041
Ø 10	Ø 10	10	R412005042
Ø 12	Ø 12	10	R412005043

QR1-S-RVR standard series

Angled plug-in connector

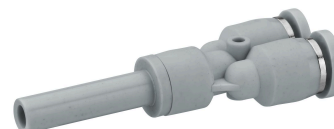


G	Ø D	Delivery unit [piece]	Part No.
Ø 6	Ø 6	10	R412005333
Ø 8	Ø 8	10	R412005334
Ø 10	Ø 10	10	R412005335
Ø 12	Ø 12	10	R412005336

G	Ø D	Delivery unit [piece]	Part No.
Ø 4	Ø 6	10	2121304060
Ø 6	Ø 8	10	2121306080
Ø 8	Ø 10	10	R412005034

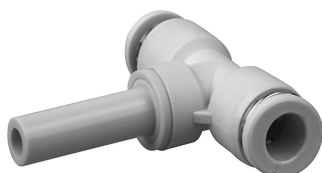
QR1-S-R2R standard series

Y-Push-in fitting, reducing



QR1-S-RTC standard series

T-push-in fitting

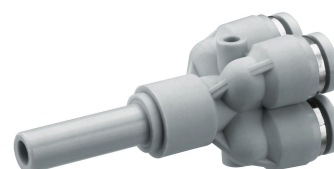


G	Ø D	Delivery unit [piece]	Part No.
Ø 4	Ø 6	10	R412005337
Ø 6	Ø 8	10	R412005338
Ø 8	Ø 10	10	R412005339
Ø 10	Ø 12	10	R412005340

G	Ø D	Delivery unit [piece]	Part No.
Ø 6	Ø 6	10	2122706000
Ø 8	Ø 8	10	2122708000
Ø 12	Ø 12	10	R412010596

QR1-S-RY4 standard series

Y-Push-in fitting, reducing



QR1-S-RY2 standard series

Y - Push-in fitting



G	Ø D	Delivery unit [piece]	Part No.
Ø 4	Ø 6	10	R412005341
Ø 4	Ø 8	10	R412005342

G	Ø D	Delivery unit [piece]	Part No.
Ø 4	Ø 4	10	R412005332

QR1-S-RCA standard series

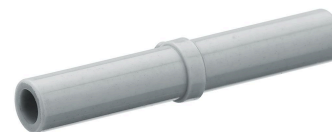
Sealing cap



G	Delivery unit [piece]	Part No.
Ø 4	20	R412005111
Ø 6	20	R412005112
Ø 8	20	R412005113
Ø 10	20	R412005114
Ø 12	20	R412005115

QR1-S-RDS standard series

Connection piece



G	Ø D	Delivery unit [piece]	Part No.
Ø 4	Ø 4	10	2123104000
Ø 6	Ø 6	10	2123106000
Ø 8	Ø 8	10	2123108000
Ø 10	Ø 10	10	2123110000
Ø 12	Ø 12	10	2123112000

QR1-S-RBS standard series

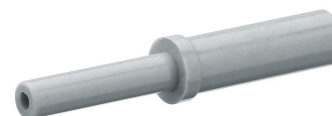
Blanking plug



G	Delivery unit [piece]	Part No.
Ø 4	20	2123204000
Ø 6	20	2123206000
Ø 8	20	2123208000
Ø 10	20	2123210000
Ø 12	20	2123212000
Ø 14	10	2123214000
Ø 16	10	R412005331

QR1-S-RDR standard series

Connection pieces, reducing



G	Ø D	Delivery unit [piece]	Part No.
Ø 6	Ø 4	10	R412005323
Ø 8	Ø 4	10	R412005324
Ø 8	Ø 6	10	R412005325
Ø 10	Ø 6	10	R412005326
Ø 10	Ø 8	10	R412005327
Ø 12	Ø 8	10	R412005328
Ø 12	Ø 10	10	R412005329

Efficient pneumatic solutions, our program: cylinders and drives, valves and valve systems, air supply management



Visit us: [Emerson.com/Aventics](https://www.emerson.com/aventics)

Your local contact: [Emerson.com/contactus](https://www.emerson.com/contactus)



[Emerson.com](https://www.emerson.com)



[Facebook.com/EmersonAutomationSolutions](https://www.facebook.com/EmersonAutomationSolutions)



[LinkedIn.com/company/Emerson-Automation-Solutions](https://www.linkedin.com/company/Emerson-Automation-Solutions)



[Twitter.com/EMR_Automation](https://twitter.com/EMR_Automation)

An example configuration is depicted on the title page. The delivered product may thus vary from that in the illustration. Subject to change. This Document, as well as the data, specifications and other information set forth in it, are the exclusive property of AVENTICS GmbH. It may not be reproduced or given to third parties without its consent. Only use the AVENTICS products shown in industrial applications. Read the product documentation completely and carefully before using the product. Observe the applicable regulations and laws of the respective country. When integrating the product into applications, note the system manufacturer's specifications for safe use of the product. The data specified only serve to describe the product. No statements concerning a certain condition or suitability for a certain application can be derived from our information. The information given does not release the user from the obligation of own judgment and verification. It must be remembered that the products are subject to a natural process of wear and aging.

The Emerson logo is a trademark and service mark of Emerson Electric Co. Brand logotype are registered trademarks of one of the Emerson family of companies. All other marks are the property of their respective owners. © 2019 Emerson Electric Co. All rights reserved.



EMERSON™

CONSIDER IT SOLVED™



青岛秉诚自动化设备有限公司
地址：中国·青岛市重庆南路99号海尔云街甲3号楼7F

服务热线：4006-918-365
网址：<http://www.ivalve.cc>

传真：(86-532)585-10-365
Email：sales@bechinas.com