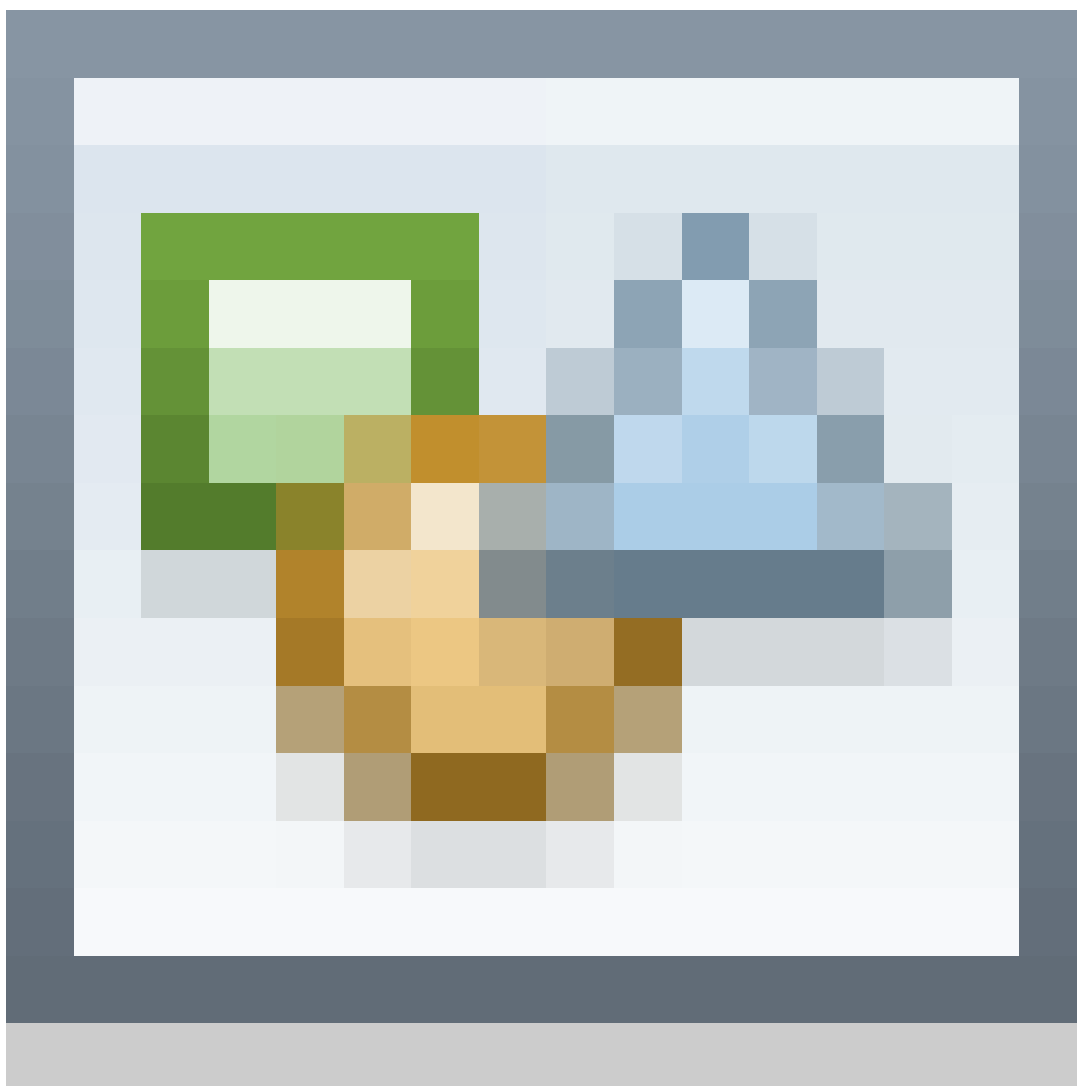


Series QR1 - Inch



AVENTICS™ Series QR1 - Inch

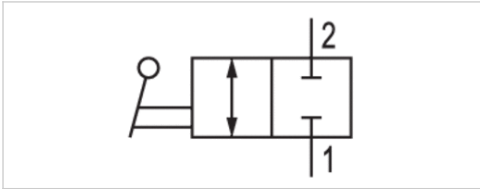


Ball valve, Series QR1-BGS

- Qn = 1300 l/min
- External thread / push-in fitting



Version	Ball valve
Working pressure min./max.	-0.896 ... 10 bar
Ambient temperature min./max.	0 ... 60 °C
Medium temperature min./max.	0 ... 60 °C
Medium	Compressed air
Weight	See table below



Technical data

Part No.	Port 1	Port 2	Flow	Delivery unit	Weight
			Qn		
R432000366	1/8 NPT	Ø1/4	1300 l/min	5 piece	0.054 kg
R432000369	1/8 NPT	Ø5/16	1300 l/min	5 piece	0.054 kg
R432000365	1/4 NPT	Ø1/4	1300 l/min	5 piece	0.054 kg
R432000368	1/4 NPT	Ø5/16	1300 l/min	5 piece	0.059 kg
R432000375	1/4 NPT	Ø 3/8	1300 l/min	5 piece	0.127 kg
R432000372	1/4 NPT	Ø1/2	1300 l/min	5 piece	0.132 kg
R432000367	3/8 NPT	Ø1/4	1300 l/min	5 piece	0.064 kg
R432000370	3/8 NPT	Ø5/16	1300 l/min	5 piece	0.068 kg
R432000376	3/8 NPT	Ø 3/8	1300 l/min	5 piece	0.132 kg
R432000373	3/8 NPT	Ø1/2	1300 l/min	5 piece	0.132 kg
R432000374	1/2 NPT	Ø 3/8	1300 l/min	5 piece	0.145 kg
R432000371	1/2 NPT	Ø1/2	1300 l/min	5 piece	0.15 kg

Nominal flow Qn at 6 bar and $\Delta p = 1$ bar

Technical information

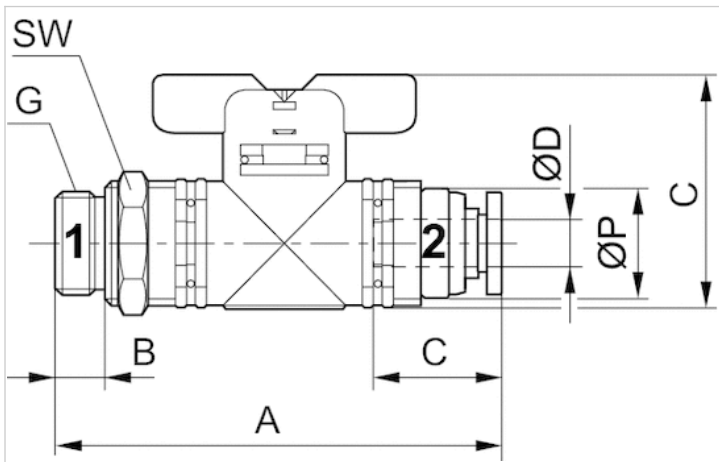
Versions with connection threads can be rotated by 360°.

Technical information

Material	
Housing	Polybutyleneterephthalate
Seals	Acrylonitrile butadiene rubber
Hand lever	Polybutyleneterephthalate

Dimensions

Dimensions in inches



Dimensions in inches

Part No.	Port G	Ø D	A	B	C	E	SW	Ø P
R432000366	1/8 NPT	Ø1/4	2.38	0.315	0.67	0.906	11/16	0.67
R432000369	1/8 NPT	Ø5/16	2.376	0.315	0.729	0.906	11/16	0.67
R432000365	1/4 NPT	Ø1/4	2.498	0.433	0.67	0.906	11/16	0.67
R432000368	1/4 NPT	Ø5/16	2.494	0.433	0.729	0.906	11/16	0.67
R432000375	1/4 NPT	Ø 3/8	3.247	0.433	0.827	1.103	31/32	0.945
R432000372	1/4 NPT	Ø1/2	3.264	0.433	0.887	1.103	31/32	0.945
R432000367	3/8 NPT	Ø1/4	2.537	0.473	0.67	0.906	11/16	0.67
R432000370	3/8 NPT	Ø5/16	2.533	0.473	0.729	0.906	11/16	0.67
R432000376	3/8 NPT	Ø 3/8	3.286	0.473	0.827	1.103	31/32	0.945
R432000373	3/8 NPT	Ø1/2	3.304	0.473	0.887	1.103	31/32	0.945
R432000374	1/2 NPT	Ø 3/8	3.444	0.591	0.82721	1.103	31/32	0.945
R432000371	1/2 NPT	Ø1/2	3.461	0.591	0.887	1.103	31/32	0.945

Elbow ball valve, Series QR1-BWG

- Qn = 1250 l/min

- External thread / push-in fitting



Version

Working pressure min./max.

Ambient temperature min./max.

Medium temperature min./max.

Medium

Weight

Ball valve

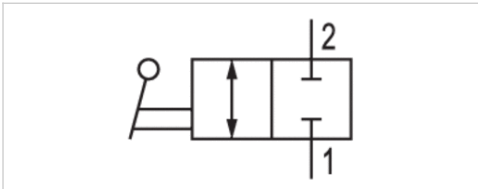
-0.95 ... 10 bar

0 ... 60 °C

0 ... 60 °C

Compressed air

See table below



Technical data

Part No.	Port 1	Port 2	Flow	Delivery unit	Weight
			Qn		
R432000378	1/8 NPT	Ø1/4	1250 l/min	5 piece	0.054 kg
R432000381	1/8 NPT	Ø5/16	1250 l/min	5 piece	0.054 kg
R432000377	1/4 NPT	Ø1/4	1250 l/min	5 piece	0.059 kg
R432000380	1/4 NPT	Ø5/16	1250 l/min	5 piece	0.059 kg
R432000387	1/4 NPT	Ø 3/8	1250 l/min	5 piece	0.132 kg
R432000384	1/4 NPT	Ø1/2	1250 l/min	5 piece	0.132 kg
R432000379	3/8 NPT	Ø1/4	1250 l/min	5 piece	0.068 kg
R432000382	3/8 NPT	Ø5/16	1250 l/min	5 piece	0.068 kg
R432000388	3/8 NPT	Ø 3/8	1250 l/min	5 piece	0.132 kg
R432000385	3/8 NPT	Ø1/2	1250 l/min	5 piece	0.136 kg
R432000386	1/2 NPT	Ø 3/8	1250 l/min	5 piece	0.15 kg
R432000383	1/2 NPT	Ø1/2	1250 l/min	5 piece	0.154 kg

Nominal flow Qn at 6 bar and $\Delta p = 1$ bar

Technical information

Versions with connection threads can be rotated by 360°.

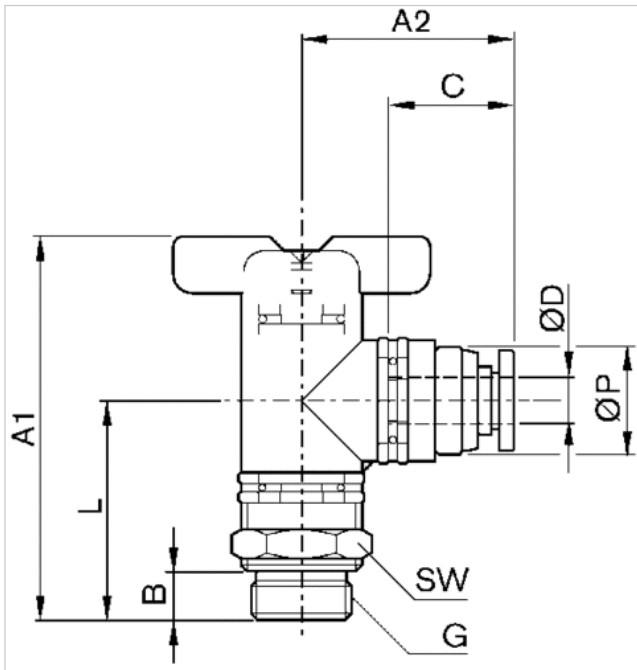
Technical information

Material

Housing	Polybutyleneterephthalate
Hand lever	Polybutyleneterephthalate

Dimensions

Dimensions in inches



Dimensions in inches

Part No.	G	Ø D	A1	A2	B	C	L	SW	Ø P
R432000378	1/8 NPT	Ø1/4	2.118	1.172	0.315	0.67	1.212	11/16	0.67
R432000381	1/8 NPT	Ø5/16	2.118	1.192	0.315	0.729	1.212	11/16	0.67
R432000377	1/4 NPT	Ø1/4	2.236	1.172	0.433	0.67	1.212	11/16	0.67
R432000380	1/4 NPT	Ø5/16	2.236	1.192	0.433	0.729	1.212	11/16	0.67
R432000387	1/4 NPT	Ø 3/8	2.84	1.58	0.433	0.827	1.738	31/32	0.945
R432000384	1/4 NPT	Ø1/2	2.84	1.576	0.433	0.887	1.738	31/32	0.945
R432000379	3/8 NPT	Ø1/4	2.275	1.172	0.473	0.67	1.212	11/16	0.67
R432000382	3/8 NPT	Ø5/16	2.275	1.192	0.473	0.729	1.212	11/16	0.67
R432000388	3/8 NPT	Ø 3/8	2.88	1.58	0.473	0.827	1.777	31/32	0.945
R432000385	3/8 NPT	Ø1/2	2.88	1.576	0.473	0.887	1.777	31/32	0.945
R432000386	1/2 NPT	Ø 3/8	3.038	1.58	0.591	0.827	1.935	31/32	0.945
R432000383	1/2 NPT	Ø1/2	3.038	1.576	0.591	0.887	1.935	31/32	0.945

Bulkhead ball valve, Series QR1-BSS

- Qn = 1000 l/min

- push-in fitting / push-in fitting



Version

Working pressure min./max.

Ambient temperature min./max.

Medium temperature min./max.

Medium

Weight

Ball valve

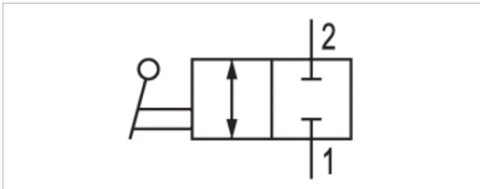
-0.95 ... 10 bar

0 ... 60 °C

0 ... 60 °C

Compressed air

See table below



Technical data

Part No.	Port 1	Port 2	Flow	Delivery unit	Weight
			Qn		
R432000401	Ø1/4	Ø1/4	1000 l/min	5 piece	0.045 kg
R432000403	Ø5/16	Ø1/4	1000 l/min	5 piece	0.05 kg
R432000404	Ø5/16	Ø5/16	1000 l/min	5 piece	0.045 kg
R432000402	Ø 3/8	Ø 3/8	1000 l/min	5 piece	0.109 kg
R432000400	Ø1/2	Ø 3/8	1000 l/min	5 piece	0.118 kg

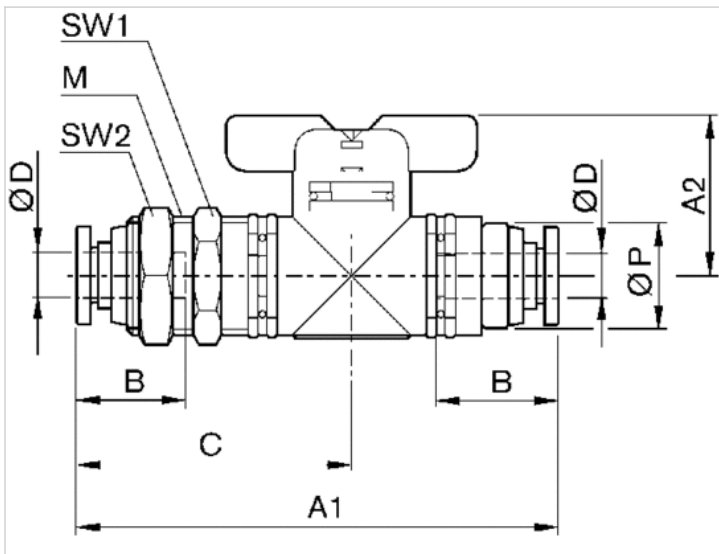
Nominal flow Qn at 6 bar and $\Delta p = 1$ bar

Technical information

Material	
Housing	Polybutyleneterephthalate
Hand lever	Polybutyleneterephthalate

Dimensions

Dimensions in inches



Dimensions in inches

Part No.	Ø D1	Ø D2	M	A1	A2	B	C	SW1	SW2	Ø P
R432000401	Ø1/4	Ø1/4	UNF 5/8	2.9	0.906	0.67	1.73	3/4	3/4	0.67
R432000403	Ø5/16	Ø1/4	UNF 5/8	2.92	0.906	0.729	1.749	3/4	3/4	0.67
R432000404	Ø5/16	Ø5/16	UNF 5/8	2.92	0.906	0.729	1.749	3/4	3/4	0.67
R432000402	Ø 3/8	Ø 3/8	UNF 7/8	3.7	1.103	0.827	2.191	1	1	0.945
R432000400	Ø1/2	Ø 3/8	UNF 7/8	3.684	1.103	0.827	2.191	1	1	0.945

Ball valve, Series QR1-BSK

- Qn = 1000 l/min

- push-in fitting / push-in fitting



Version

Working pressure min./max.

Ambient temperature min./max.

Medium temperature min./max.

Medium

Weight

Ball valve

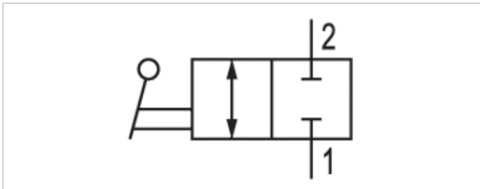
-0.95 ... 10 bar

0 ... 60 °C

0 ... 60 °C

Compressed air

See table below



Technical data

Part No.	Port 1	Port 2	Flow	Delivery unit	Weight
			Qn		
R432000406	Ø1/4	Ø1/4	1000 l/min	5 piece	0.041 kg
R432000408	Ø5/16	Ø5/16	1000 l/min	5 piece	0.045 kg
R432000407	Ø 3/8	Ø 3/8	1000 l/min	5 piece	0.1 kg
R432000405	Ø1/2	Ø1/2	1000 l/min	5 piece	0.104 kg

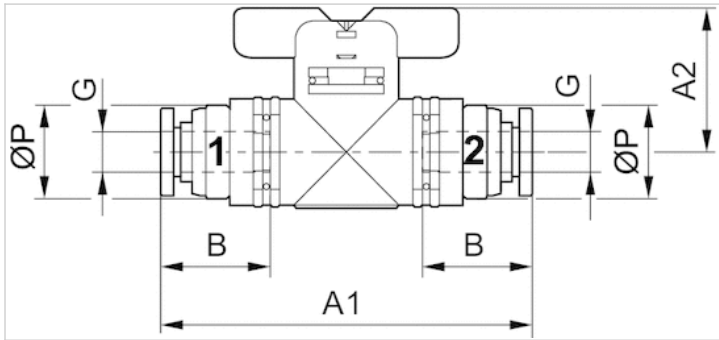
Nominal flow Qn at 6 bar and $\Delta p = 1$ bar

Technical information

Material	
Housing	Polybutyleneterephthalate
Seals	Acrylonitrile butadiene rubber
Hand lever	Polybutyleneterephthalate

Dimensions

Dimensions in inches



Dimensions in inches

Part No.	Port G	A1	A2	B	Ø P
R432000406	Ø1/4	2.34	0.906	0.67	0.67
R432000408	Ø5/16	2.332	0.906	0.729	0.67
R432000407	Ø 3/8	3.089	1.103	0.827	0.945
R432000405	Ø1/2	3.124	1.103	0.827	0.945

Efficient pneumatic solutions, our program: cylinders and drives, valves and valve systems, air supply management



Visit us: Emerson.com/Aventics

Your local contact: Emerson.com/contactus



Emerson.com



Facebook.com/EmersonAutomationSolutions



LinkedIn.com/company/Emerson-Automation-Solutions



Twitter.com/EMR_Automation

An example configuration is depicted on the title page. The delivered product may thus vary from that in the illustration. Subject to change. This Document, as well as the data, specifications and other information set forth in it, are the exclusive property of AVENTICS GmbH. It may not be reproduced or given to third parties without its consent. Only use the AVENTICS products shown in industrial applications. Read the product documentation completely and carefully before using the product. Observe the applicable regulations and laws of the respective country. When integrating the product into applications, note the system manufacturer's specifications for safe use of the product. The data specified only serve to describe the product. No statements concerning a certain condition or suitability for a certain application can be derived from our information. The information given does not release the user from the obligation of own judgment and verification. It must be remembered that the products are subject to a natural process of wear and aging.

The Emerson logo is a trademark and service mark of Emerson Electric Co. Brand logotype are registered trademarks of one of the Emerson family of companies. All other marks are the property of their respective owners. © 2017 Emerson Electric Co. All rights reserved.
2019-03



CONSIDER IT SOLVED™



青岛秉诚自动化设备有限公司
地址：中国·青岛市重庆南路99号海尔云街甲3号楼7F

服务热线：4006-918-365
网址：<http://www.ivalve.cc>

传真：(86-532)585-10-365
Email：sales@bechinas.com