



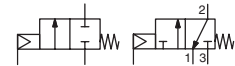
VALVES

pressure operated

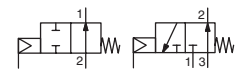
for superheated water and steam applications

3/8 .. 2 1/2 / DN 10 .. DN 65

NC



NO



2/2-3/2

Series

290

390

FEATURES

- Remote-controlled disc valve for superheated water and steam at temperatures up to 184°C
- High flow due to angled seat design
- Equipped with a piston-type operator
- Anti-waterhammer design (fluid entry under the disc)
- Wide range of operators (32, 50, 63, 90 and 125 mm) for maximum performance at different minimum pilot pressures
- Operator rotatable by 360°
- High performance, maintenance-free stuffing box
- Optical position indicator
- Proportional valves (see section: "Proportional Valves")
- The valves in conformity with IEC 61508 Standard (2010 route 2_H version) certified with integrity levels: SIL 2 for HFT = 0

GENERAL

Differential pressure:	[1 bar = 100 kPa]
Steam	0 to 10 bar
Superheated water	0 to 16 bar
Maximum allowable pressure	16 bar

fluids	max. temperature (TS)	disc seal
steam, superheated water	+ 184°C	PTFE

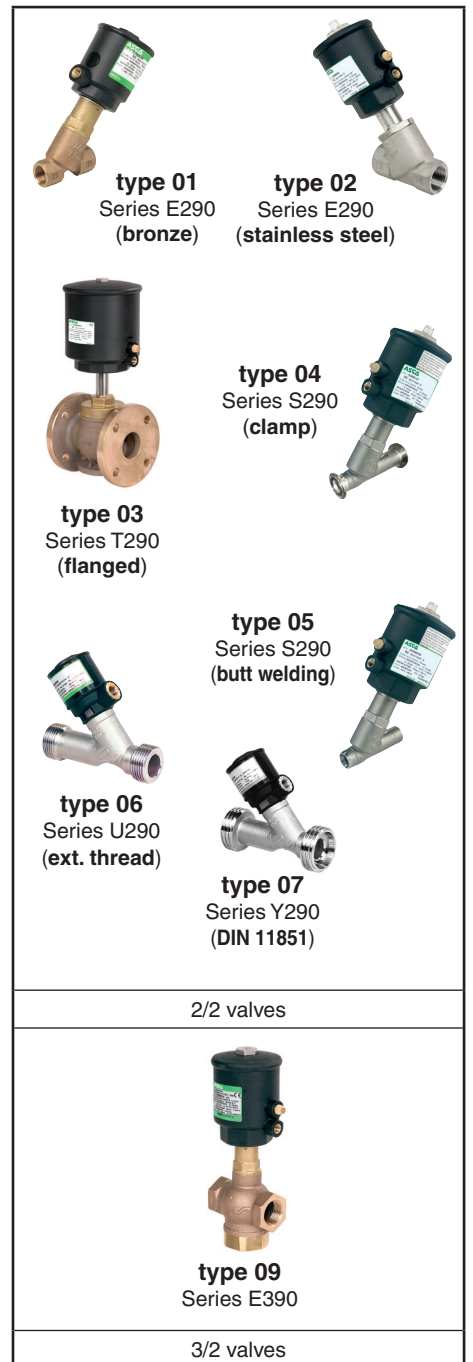
2/2 CONSTRUCTION

	Bronze body	Stainless steel body
Body	Bronze	Stainless steel ⁽¹⁾
Connection:		
Threaded	1/2 to 2 1/2 (type 01)	3/8 to 2 1/2 (type 02)
Clamp	-	DN 10 to 65 (type 04)
Butt welding	-	DN 10 to 65 (type 05)
External threads	-	1/2 to 1 (type 06)
External threads DIN 11851	-	DN 10 to 20 (type 07)
Flanges (PN16)	DN 25 to 50 (type 03)	(RD 28x1/8 .. RD 44x1/6)
See section: Pressure Operated Valves (2/2)		
Threaded	Page: 15 (www.asco.com)	Pages: 15 (www.asco.com) / 23 (www.asco.com) ⁽²⁾
Clamp	-	Pages: 27 (www.asco.com) / 31 (www.asco.com)
Butt welding	-	Pages: 27 (www.asco.com) / 31 (www.asco.com)
External threads	-	Page: 23 (www.asco.com)
External threads DIN 11851	-	Page: 25 (www.asco.com)
Flanges	Page: 35 (www.asco.com)	-

3/2 CONSTRUCTION

	Bronze body
Body	Bronze
Connection:	
Threaded	1/2 to 2 (type 09)
See section: Pressure Operated Valves (3/2)	
Threaded	Page: 1 (www.asco.com)

⁽¹⁾ All stainless steel AISI 316L, contact us.
⁽²⁾ All stainless steel AISI 316L included.



All leaflets are available on: www.asco.com

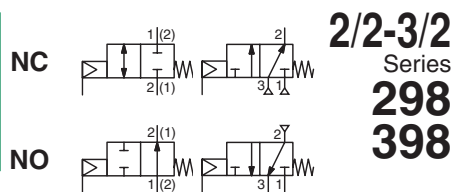
00104GB-2017/R01
Availability, design and specifications are subject to change without notice. All rights reserved.



青岛秉诚自动化设备有限公司
地址：中国·青岛市重庆南路99号海尔云街甲3号楼7F

服务热线：4006-918-365
网址：http://www.ivalve.com

Hot Water & Steam - 13
传真：(86-532)585-10-365
Email：sales@bechinas.com



2/2-3/2
Series
298
398

FEATURES

- Ruggedly built valve, particularly recommended for use with steam, superheated water, corrosive fluids
- High-performance, thermal shock-resistant, maintenance-free stuffing box
- Pressure can be applied to any port as needed by the process
- 2/2: Anti-waterhammer design (fluid entry at orifice 1), recommended for use with liquids
- 3/2 U: Mixer function (two pressure inlets at 1 or 3, one outlet at 2) or distributor function (one pressure inlet at 2, two outlets at 1 and 3)
- Allowable backpressure: up to 40 bar
- Optical position indicator as standard
- Autoclavable valve for use at high ambient temperatures up to 180°C
- The valves in conformity with IEC 61508 Standard (2010 route 2_H version) certified with integrity levels: SIL 2 for HFT = 0

GENERAL

Differential pressure:	[1 bar = 100 kPa]
Steam	0 to 24 bar 0 to 32 bar
Superheated water	0 to 21 bar 0 to 40 bar
Maximum allowable pressure	40 bar

fluids (*)	temperature range	disc seal (*)
DN 15-20-25: air and gas groups 1 & 2 DN 32-40-50: air and gas group 2	-10°C to +233°C	PEEK
all DN: water, oil, liquids groups 1 & 2 and steam	-10°C to +250°C	metal-to-metal
	-10°C to +180°C	PTFE

(*) Ensure that the compatibility of the fluids in contact with the materials is verified.

2/2 CONSTRUCTION

Body	Stainless steel
Connection:	
Threaded	1/2 to 2 (type 01)
Flanges (DIN and ANSI Class 300)	DN 15 to 50 (type 02)
Socket welding	DN 15 to 50 (type 03)

See section: Pressure Operated Valves (2/2)

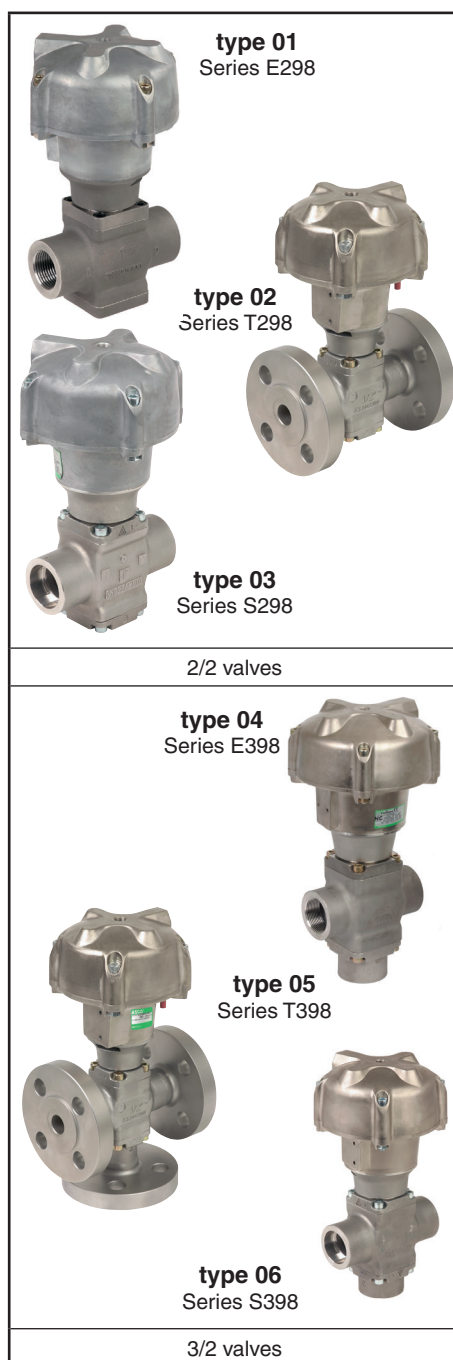
Threaded	Page: 53 (www.asco.com)
Flanges	Page: 57 (www.asco.com)
Socket welding	Page: 61 (www.asco.com)

3/2 CONSTRUCTION

Body	Stainless steel
Connection:	
Threaded	1/2 to 2 (type 04)
Flanges (DIN and ANSI Class 300)	DN 15 to 50 (type 05)
Socket welding	DN 15 to 50 (type 06)

See section: Pressure Operated Valves (3/2)

Threaded	Page: 3 (www.asco.com)
Flanges	Page: 7 (www.asco.com)
Socket welding	Page: 11 (www.asco.com)

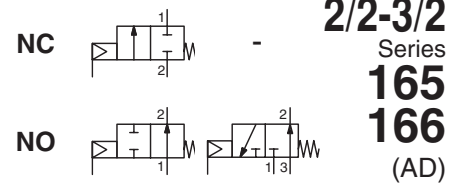


00104GB-2017/R01
Availability, design and specifications are subject to change without notice. All rights reserved.



VALVES

pressure operated
for steam applications
1/2 .. 2 / DN 15 .. DN 80



FEATURES

- Differential-action valve for high-pressure control at reduced pilot pressure
- Powerful spring and large diaphragm ensuring reliable operation
- Heavy-duty valve recommended for steam applications

GENERAL

Differential pressure: [1 bar = 100 kPa]
Steam 0 to 10 bar
Maximum allowable pressure: 16 bar

fluids	max. temperature (TS)	types
steam	+ 184°C	01-02-04

2/2 CONSTRUCTION

Body Bronze
Connection:
Threaded 1/2 to 2 (type 01)
Flanges (PN16) DN 15 to 80 (type 02)

See section: Pressure Operated Valves (2/2)

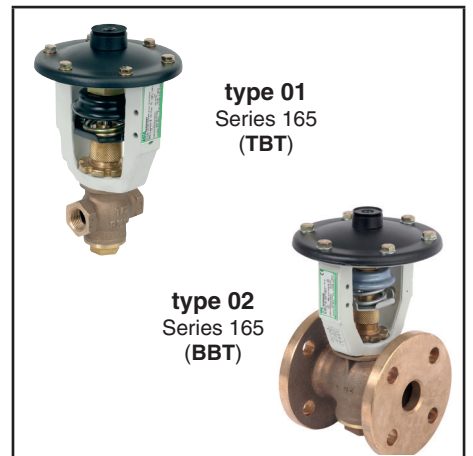
Threaded Page: 77 (www.asco.com)
Flanges (PN16) Page: 79 (www.asco.com)

3/2 CONSTRUCTION

Body Bronze
Connection:
Threaded 1/2 to 2 (type 04)

See section: Pressure Operated Valves (3/2)

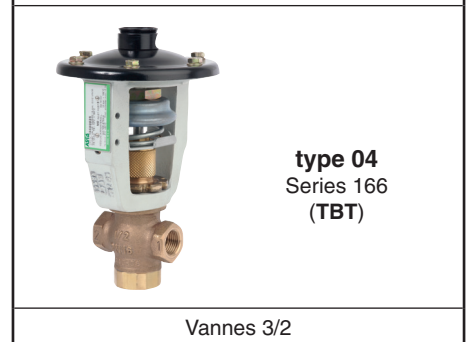
Threaded Page: 17 (www.asco.com)



type 01
Series 165
(TBT)

type 02
Series 165
(BBT)

Vannes 2/2



type 04
Series 166
(TBT)

Vannes 3/2

