

## FEATURES

- Sandwich-type plate for pressure isolation on port 1.
- Pressure isolating plate designed to exhaust on ports 3 and 5.
- The pressure isolating plate is fitted between the subbase and the valve.
- Allows removal of valves without affecting system operation.
- **Lockable with D6 padlock in open or closed position.**
- Not suitable for W3-type valves (centre closed).

## GENERAL

Operating pressure -0,950 to 12 bar  
Ambient temperature range -10°C to +60°C

## CONSTRUCTION

MATERIALS IN CONTACT WITH FLUID	
(*) Ensure that the compatibility of the fluids in contact with the materials is verified	
Body	Aluminium
Screw	Steel
Seals	NBR

## SPECIFICATIONS

size	code
ISO1	88100963

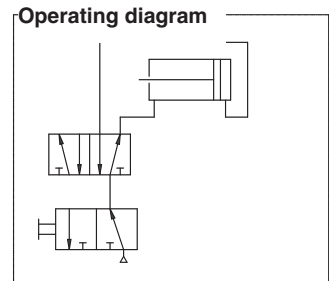
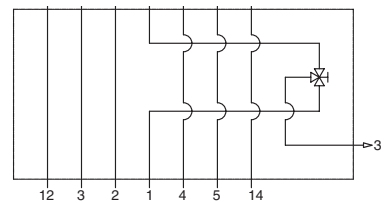
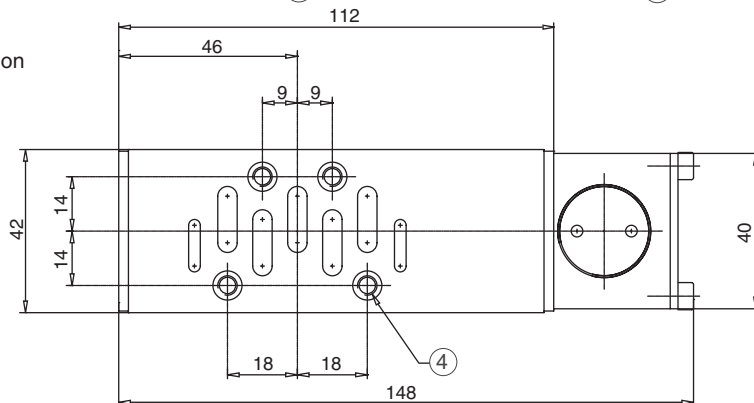
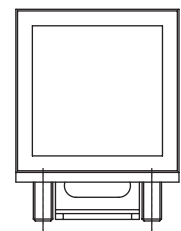
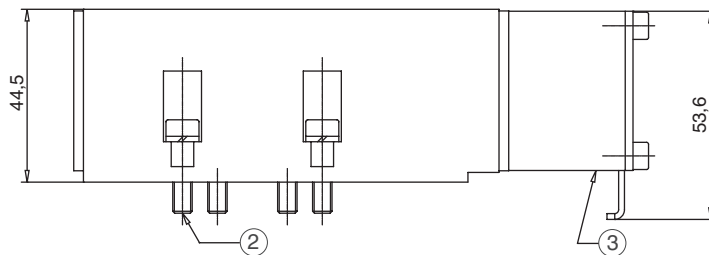
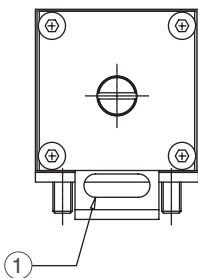


Diagram of pressure isolating plate  
Valve side interface



Subbase side interface

## DIMENSIONS (mm), WEIGHT (kg)



- ① Lockable in open or closed position with dia. 6 mm padlock
- ② 4xM5 (subbase mounting)
- ③ Exhaust port Ø2
- ④ 4x female threads (ISO1 valve mounting)

series	weight
ISO 1	0,510

01423GB-2017/R01  
Availability, design and specifications are subject to change without notice. All rights reserved.

All leaflets are available on: [www.asco.com](http://www.asco.com)

