



POWER-SAVE CONNECTORS

Industry standard form B (11 mm)
ISO 4400 / EN 175301-803, form A,
sizes 22 and 30

Series
881

FEATURES

- The main advantages of a connector with voltage reduction are:
 - Power savings (lower current consumption)
 - Low heat development in the solenoid valve

GENERAL

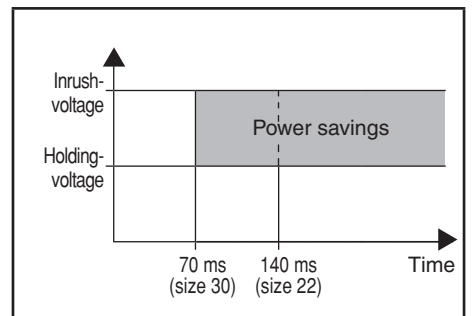
Once a DC-type solenoid valve is activated, only the holding current, which corresponds to 50% of the inrush voltage, is necessary to keep the valve in position. The power-save connector switches to holding voltage after approx. 70 ms (size 30) or 140 ms (size 22). The holding power is thereby reduced to a quarter of the inrush power. During power reduction, the valve's coil is piloted via PWM voltage pulses.

CONSTRUCTION

Enclosure PA (Polyamide)

ELECTRICAL CHARACTERISTICS

	Size 22	Size 30
Input voltage	12/24 V DC \pm 10%	10 to 30 V DC
Output voltage	12 V DC \pm 10%	6 to 30 V DC
Power rating	Max. 12 W	Max. 30 W
Connector	Spade plug	Spade plug
Electrical safety	Industry standard, form B	ISO 4400/EN 175301-803, form A
Number of contacts	2+1 common earth	2+1 common earth
Electrical enclosure protection	IP65	IP65
Cable diameter	6 - 8 mm	6 - 8 mm
LED green	Solenoid valve actuation	Solenoid valve actuation
LED red	-	Overcurrent or overvoltage
Voltage reduction	After 140 ms	After 70 ms
PWM frequency	7 KHz	50 KHz



SPECIFICATIONS

description	size	input voltage	holding voltage	catalogue number
Power-save connector with voltage reduction	22	12 V DC \pm 10%	6 V	88100944
		24 V DC \pm 10%	12 V	88100934
	30	12 V DC \pm 10%	4 V	88100945
		30 V DC \pm 10%	15 V	
		10 V DC \pm 10%	5 V	

01037GB-2016/R02
Availability, design and specifications are subject to change without notice. All rights reserved.

All leaflets are available on: www.asco.com



青岛秉诚自动化设备有限公司
地址：中国·青岛市重庆南路99号海尔云街甲3号楼7F

服务热线：4006-918-365
网址：<http://www.ivalve.cc>

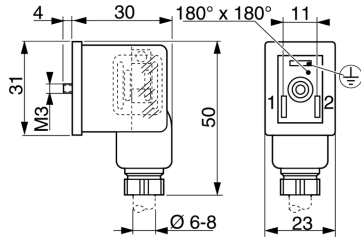
传真：(86-532)585-10-365
Email：sales@bechinas.com

V1136-1

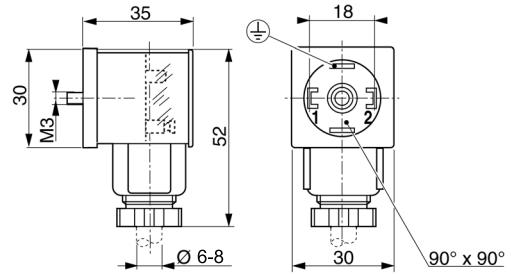
J

DIMENSIONS (mm), WEIGHT (kg)

SIZE 22



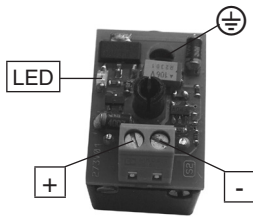
SIZE 30



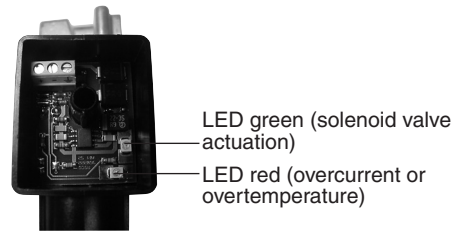
weight	
size 22	size 30
0,025	0,033

ELECTRICAL CONNECTION

SIZE 22



SIZE 30



Screw terminals: up to 1 mm² cable

+ = Pilot voltage + (12 V/24 V)

- = Pilot voltage - (GND)

⊕ = Earth terminal, straight through

Screw terminals: up to 1 mm² cable

+ = Pilot voltage + (10-30V)

- = Pilot voltage - (GND)

⊕ = Earth terminal (PE)



① = Valve voltage +

② = Valve voltage -

③ = Earth terminal (PE)



① = Valve voltage +

② = Valve voltage -

③ = Earth terminal (PE)