

ASCO™ Solenoid Valves

For High and Low Temperature Applications, Pad Mounting Body
Direct Operated, For Subbase 1/4" or 1/2"

3/2 NC
Series
314

- High and low temperature solenoid pilot valve intended for single acting actuator control
- Solenoid pilot valve with CNOMO size 30 interface (compatible with series 551-552-553)
- Epoxy moulded coil suitable for exterior applications
- Version with or without manual operator

General

Differential pressure See «SPECIFICATIONS» [1 bar = 100 kPa]
Pneumatic interface ISO 15218 (CNOMO E06.05.80, size 30)
Response time 8 - 20 ms

fluids (*)	temperature range (TS)	seal materials (*)
air or inert gas	-25°C to +60°C	NBR (nitrile)
	-25°C to +90°C	FPM (fluoroelastomer)

Materials in contact with fluid

(*) Ensure that the compatibility of the fluids in contact with the materials is verified

Body	Aluminium, black cathaphoresis coating
Threaded nut	Steel
Shading coil	Copper
Core tube	Stainless steel
Core and plugnut	Stainless steel
Springs	Stainless steel
Seals	NBR (+60°C) or FPM (+90°C)

Electrical characteristics

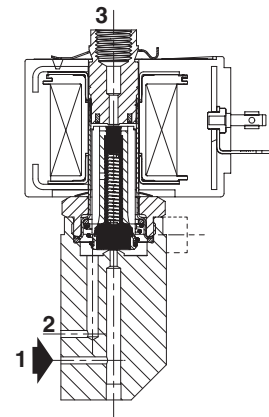
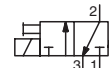
Coil insulation class F (+60°C) or H (+90°C)
Connector Spade plug (cable Ø 6-10 mm)
Connector specification ISO 4400 / EN 175301-803, form A
Electrical safety IEC 335
Electrical enclosure protection Moulded IP65 (EN 60529)
Standard voltages DC (=) : 24V - 48V
(Other voltages and 60 Hz on request) AC (-) : 24V - 48V - 115V - 230V/50 Hz

operator ambient temperature range (TS) (°C)	power ratings				replacement coil ⁽¹⁾	
	inrush ~	holding ~		hot/cold =	~	=
-25 to +55	(VA)	(VA)	(W)	(W)	230 V/50 Hz	24 V DC
	50	25	10,1	8,5/11,6	238613-059	238713-006
	50	25	10,1	8,5/11,6	238813-059	238913-006

⁽¹⁾ All 238 basic numbers are UL & CSA approved and marked with the UR (recognised component) & CSA logos.

Options

- Connector with visual indication and peak voltage suppression or with cable length of 2 m

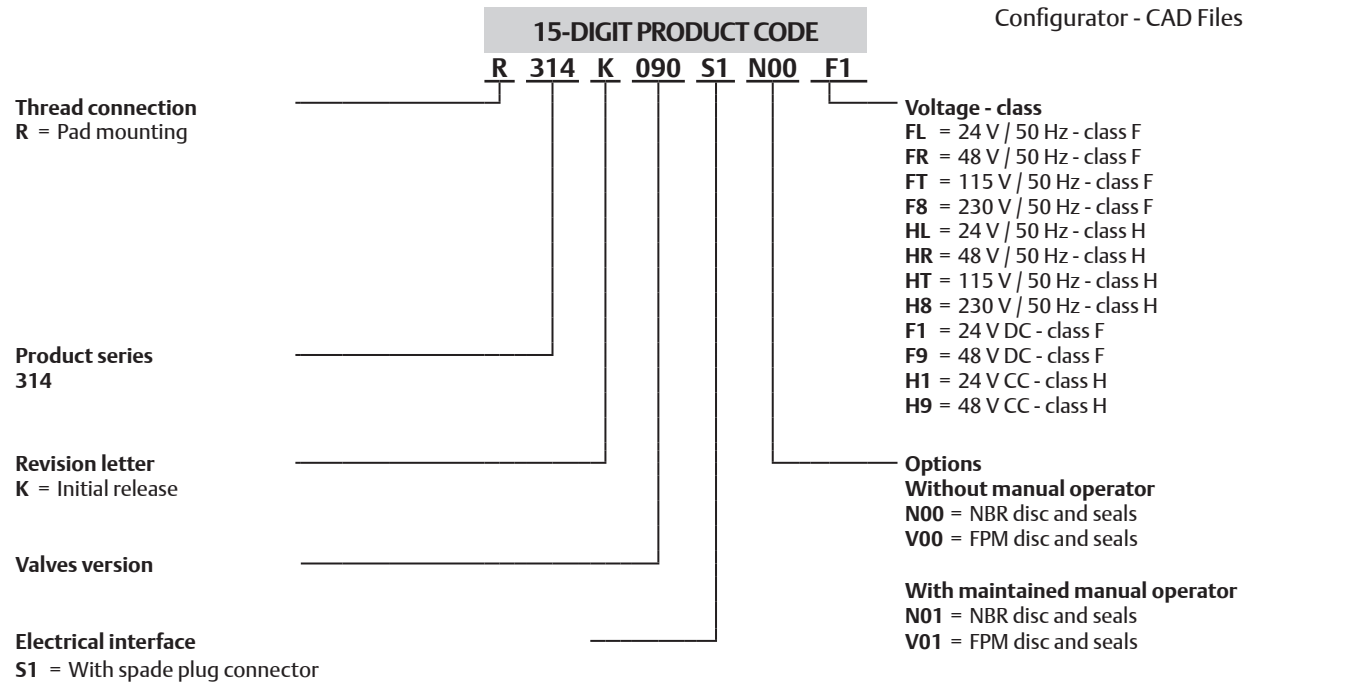


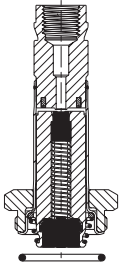
Specifications

pipe size	orifice size	flow coefficient Kv				operating pressure differential (bar)				power coil (W)		dimensions / type ⁽¹⁾	15-DIGIT PRODUCT CODE							
		1 → 2		2 → 3		min.	max. (PS)		~	=	voltage code									
		(mm)	(m³/h)	(l/min)	(m³/h)		(l/min)	air (*)			~		=	24 V/50 Hz	48 V/50 Hz	115 V/50 Hz	230 V/50 Hz	24 V/DC	48 V/DC	
								~												=
Without manual operator																				
NC - Normally closed, NBR seals, low temperatures																				
pad mounting	2	0,11	1,8	0,11	1,8	0	10	10	10,1	11,6	01	R314K090S1N00	FL	FR	FT	F8	F1	F9		
NC - Normally closed, FPM seals, high and low temperatures																				
pad mounting	2	0,11	1,8	0,11	1,8	0	10	10	10,1	11,6	01	R314K090S1V00	HL	HR	HT	H8	H1	H9		
With maintained manual operator																				
NC - Normally closed, NBR seals, low temperatures																				
pad mounting	2	0,11	1,8	0,11	1,8	0	10	10	10,1	11,6	01	R314K090S1N01	FL	FR	FT	F8	F1	F9		
NC - Normally closed, FPM seals, high and low temperatures																				
pad mounting	2	0,11	1,8	0,11	1,8	0	10	10	10,1	11,6	01	R314K090S1V01	HL	HR	HT	H8	H1	H9		

⁽¹⁾ For dimensions, see drawing(s) for each construction type on the following page(s).

(*) Ensure that the compatibility of the fluids in contact with the materials is verified.



		Spare parts kits no. (*)					
		AC (~)			DC (=)		
			NBR	FPM		NBR	FPM
	R314K090	M200071	N00	V00	M200067	N00	V00

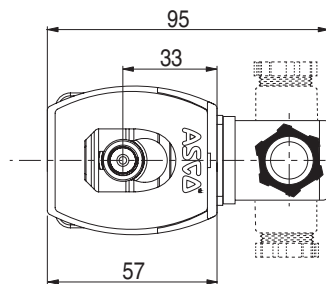
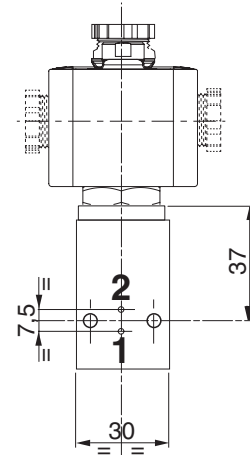
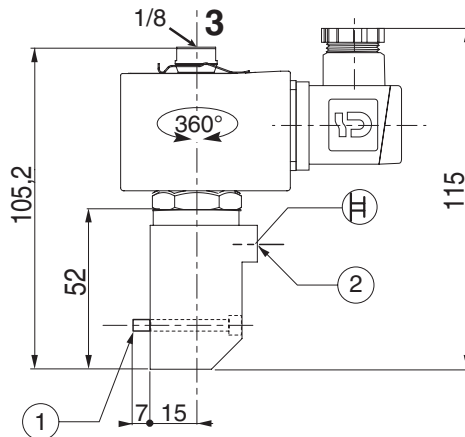
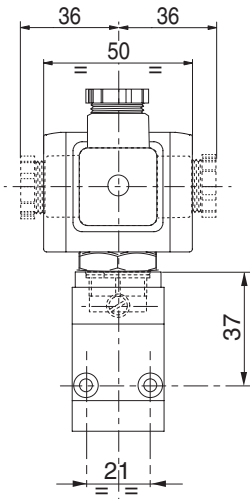
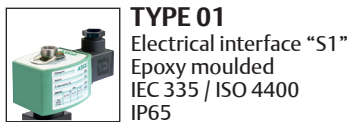
(*) Ensure that the compatibility of the fluids in contact with the materials is verified.

Installation

- The solenoid valves can be mounted in any position without affecting operation
- Solenoid valves supplied with mounting pad screws
- Installation on valve or single, non-joinable subbase with ISO 15218 (CNOMO, size 30) interface
- Pipe connection G 1/8 has standard thread according to ISO 228/1
- Installation/maintenance instructions are included with each valve

Dimensions (mm), Weight (kg)

Configurator - CAD Files



- ① Mounting: 2 screws M4 x 35
- ② Manual operator location

type	weight ⁽¹⁾
01	0,49

⁽¹⁾ Incl. coil(s) and connector(s).

01481CB-2019/R02
Availability, design and specifications are subject to change without notice. All rights reserved.

