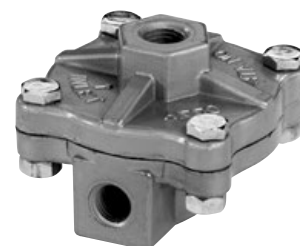
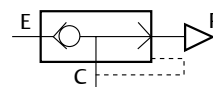


## Features

- Compact, 3-ported valves have oversized orifice for quick exhaust of cylinders, brakes, actuators, clutches, etc.
- The valves are recommended for pilot applications with high flow, wide pressure ranges and quick exhaust flow
- Allow use of smaller pipe lines and control components
- When used as a shuttle valve, high pressure from the two inlets exits through the common outlet
- Special execution for low ambient temperatures
- Mountable in any position
- The quick exhaust valves satisfy all relevant EC Directives



## General

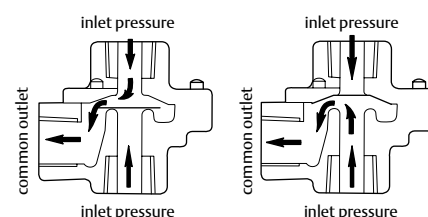
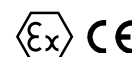
**Differential pressure** 0,35 - 10,0 bar [1 bar = 100kPa]  
**Maximum viscosity** 65cST (mm²/s)  
**Response times** 50 - 100 ms

fluids (*)	temperature range (TS)	seal materials (*)
air, inert gas	-20°C to + 80°C -40°C to + 85°C	NBR (nitrile) TPE (thermoplastic elastomer)

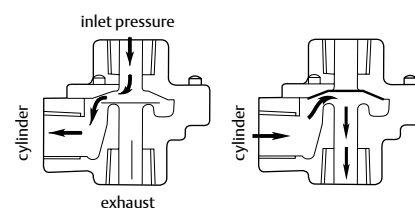
## Materials in contact with fluid

(\*) Ensure that the compatibility of the fluids in contact with the materials is verified

	Zinc body	Stainless steel body
<b>Body</b>	Die-Cast zinc	AISI 300 SS
<b>Bonnet</b>	Die-Cast zinc	AISI 300 SS
<b>Sealings</b>	NBR	NBR
<b>Diaphragm</b>	NBR	TPE



shuttle valve  
flow diagram



quick exhaust valve  
flow diagram

## Specifications

pipe size	flow coefficient Kv				operating pressure differential (bar)		basic catalogue number		type
	port				min.	air (*)			
	P → C	C → E	P → C	C → E			zinc	stainless steel	
NPT	(m³/h)		(l/min)						
<b>Zinc body</b>									
1/8	0,6	0,7	10,0	11,7	0,35	8,6	V043A005	-	01
1/4	0,7	0,9	11,7	15,0	0,35	8,6	V043A006	-	01
1/4	1,7	1,7	28,3	28,3	0,35	8,6	V043A001	-	02
3/8	3,0	3,9	50,0	65,0	0,35	8,6	V043A002	-	02
<b>Stainless Steel body</b>									
1/4	0,7	1,2	11,7	20,0	1,0	10,0	-	V043A051	03

**Suffix table**

suffix					description
1	2	3	4	5	
G	D				ATEX non-electrical, 2 GD c, construction safety, gas/dust (EN 13463-5)

**Product selection guide**

**STEP 1**

Select basic catalogue number.

Refer to the specifications table on page 1.

**Example: V043A051**

**STEP 2**

Select suffix (combination) if required.

Refer to the suffix table on page 2.

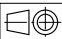
**Example: GD**

**STEP 3**

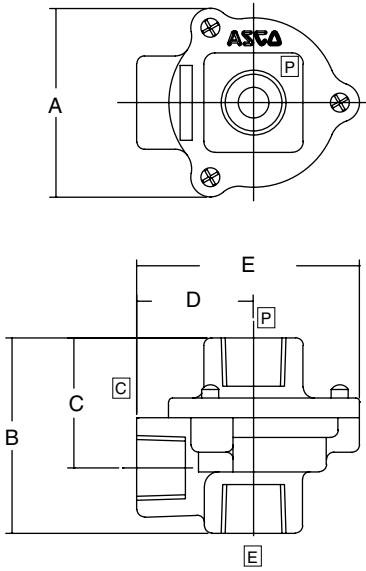
Final catalogue / ordering number.

**Example:**

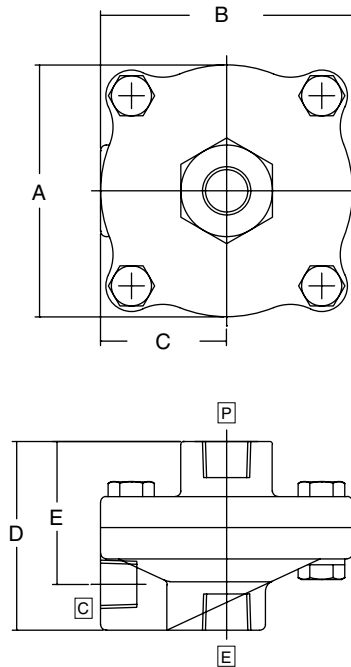
**V043A051GD**

**Dimensions (mm), Weight (kg)** 

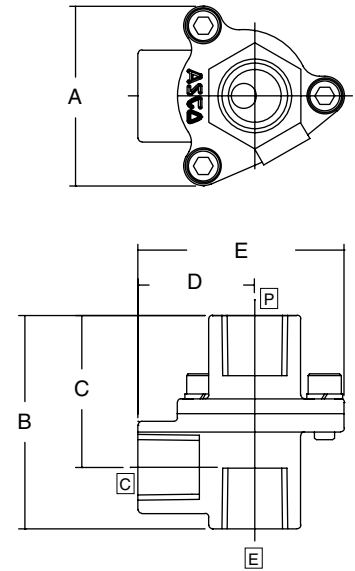
**Type 01**



**Type 02**



**Type 03**



type	A	B	C	D	E	weight
01	40	40	27	24	46	0,15 kg
02	70	70	35	52	40	0,25 kg
03	37	44	31	24	43	0,45 kg

**Installation**

- Installation/maintenance instructions are included with each valve
- The valves can be mounted in any position without affecting operation
- Threaded pipe connection identifier is B = NPT (ANSI 1.20.3)
- Declarations of conformity are available on request

80442GB-2021/R01 -- Availability, design and specifications are subject to change without notice. All rights reserved.